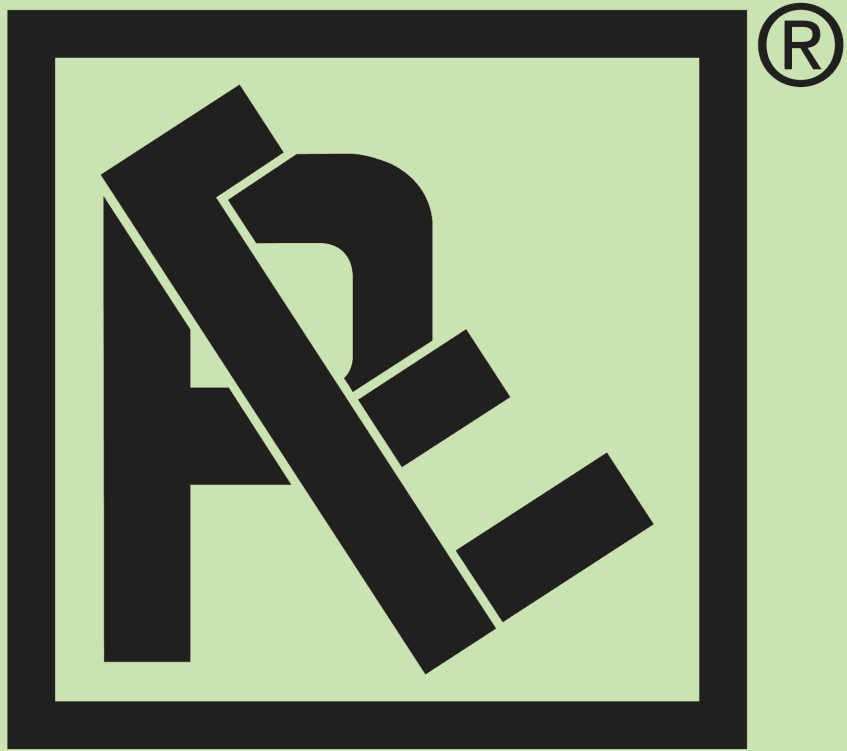


**Chiusure per  
furgoni**

***External door  
handles for vans***

**38**



**RE-ALL**

## Chiusure esterne tubo D.16

### External door handles for D.16 tube

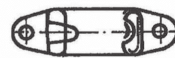
Art.	Descrizione / Description
38-00002	Chius.inox sciolta c/maniglia c/chave inox / S.s.kit with s.s.door handle with key-without tube
38-00004	Chius.inox con tubo e maniglia c/chave inox / S.s.kit with s.s.door handle with key-with s.s. tube
38-00020	Chius.zinc.sciolta c/maniglia piatta zinc. / Galvanized kit with galv. flat lever-without tube
38-00021	Chius.zinc.con tubo e maniglia piatta zinc. / Galvanized kit with galv.flat lever-with galv. tube

**38-00005**

Scontro inox / Stainless steel keeper

**38-00022**

Scontro zincato / Galvanized keeper



**38-00006**

Arpione inox / Stainless steel cam

**38-00023**

Arpione zincato / Galvanized cam

**38-00009**

Rondella inox / Stainless steel wash

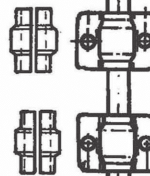
**38-00026**

Rondella zincata / Galvanized wash



**38-00007**

Semiboccola nylon / Nylon half bush



**38-00008**

Guida asta inox H.45 / S.s.steel clamp H.45

**38-00025**

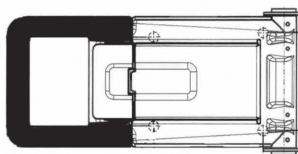
Guida asta zinc.H.45 / Galv. clamp H.45

**38-00017**

Tubo Ø16x2 inox L=2500  
Stainless steel tube Ø16x2 L= 2500

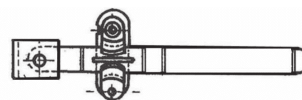
**38-00032**

Tubo Ø16x2 zincato L=2500  
Galvanized tube Ø16x2 L= 2500



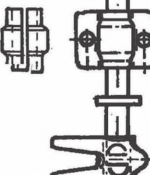
**38-00027/C**

Kit ferma leva zinc.c/man.piatta zinc.  
Kit Galv.lever stay with Galv. flat lever



**38-00015**

Maniglia con chiave inox L= 242,50  
S.s.door handle with key L= 242,50



**38-00031**

Maniglia piatta zincata L=265  
Galvanized flat lever L=265

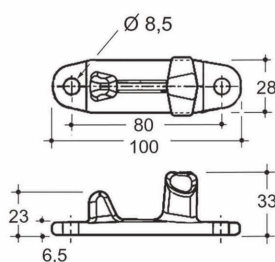


## Componenti per chiusure esterne tubo D.16

*Components for external door handles for D.16 tube*

Art. 38-0005/C		
Kit inox per chius. D. 16 composto <i>Kit for S.s.external door handles D.16 tube</i>		
A	Art. 38-00005	Nr. 2
B	Art. 38-00006	Nr. 2
C	Art. 38-00009	Nr. 2
D	Art. 38-00008	Nr. 3
E	Art. 38-00007	Nr. 6

Art. 38-00022/C		
Kit zinc. per chius. D.16 composto <i>Kit for Galv.external door handles D.16 tube</i>		
A	Art. 38-00022	Nr. 2
B	Art. 38-00023	Nr. 2
C	Art. 38-00026	Nr. 2
D	Art. 38-00025	Nr. 3
E	Art. 38-00007	Nr. 6

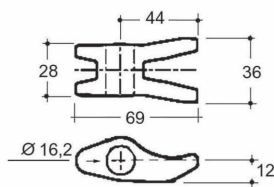


(A)

**Art. 38-00005**  
Scontro inox D.16  
S.s.keeper D.16

**Art. 38-00022**  
Scontro zinc. D.16  
Galv.keeper D.16

(Kg.0,190)

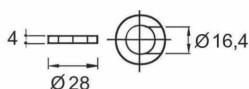


(B)

**Art. 38-00006**  
Arpione inox D.16  
S.s. cam D.16

**Art. 38-00023**  
Arpione zinc.D.16  
Galv.cam D.16

( kg. 0,080 )

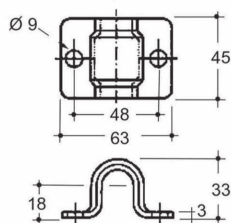


(C)

**Art. 38-00009**  
Rondella inox D.16  
S.s. washer D.16

**Art. 38-00026**  
Rondella zinc.D.16  
Galv. washer D.16

( Kg. 0,010 )

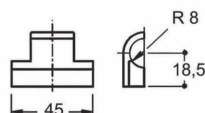


(D)

**Art. 38-00008**  
Guida asta inox H.45  
S.s. clamp H=45

**Art. 38-00025**  
Guida asta zinc. H.45  
Galv. clamp H=45

( Kg. 0,090 )



(E)

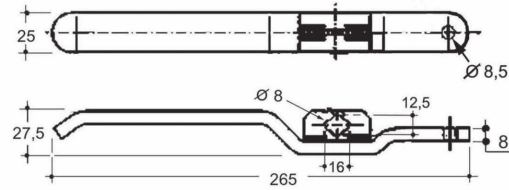
**Art. 38-00007**  
Semiboccola nylon  
Nylon half bush

( Kg. 0,007 )

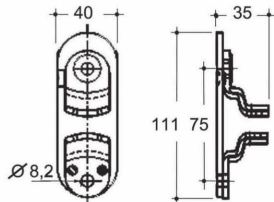
**Componenti per chiusure esterne tubo D.16**

**Components for external door handles for D.16 tube**

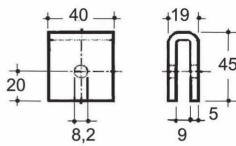
Art. 38-00027/C		
Kit ferma leva zinc.c/man.piatta zinc. Kit Galv.lever stay with Galv. flat lever		
A	Art. 38-00031	Nr. 1
B	Art. 38-00027	Nr. 1
C	Art. 38-00029	Nr. 1
D	Art. 38-00011	Nr. 1
E	Art. 38-00013	Nr. 1



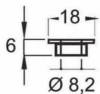
(A) **Art. 38-00031** (Kg.0,430)  
Maniglia piatta zincata L=265  
Galvanized flat lever L=265



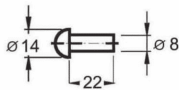
(B) **Art. 38-00027** (Kg.0,216)  
Ferma leva zinc.  
Galv.lever stay



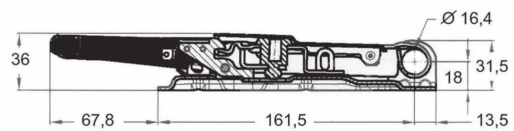
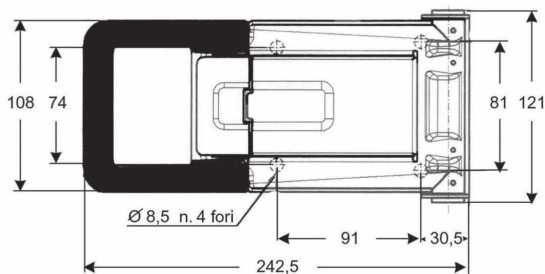
(C) **Art. 38-00012** **Art. 38-00029**  
Forcella inox / S.s. lever clamp  
Forcella zincata / Galv.level clamp  
**In esaurimento / In exhaustion** (Kg. 0,120)



(D) **Art. 38-00011** (kg.0,003)  
Rondella inox / S.s. washer



(E) **Art. 38-00013** (kg.0,013)  
Ribattino inox / S.s.lever clamp pin



**Art. 38-00015** (Kg.0,960)  
Maniglia inox con chiave inox L=242,50  
S.s.door handle with S.s. key L=242,50

## Chiusure esterne tubo D. 22

## External door handles for D.22 tube

Art.	Descrizione / Description
38-00039	Ch.inox sciolta c/man.piatta inox / S.s. kit with s.s. flat lever - without tube
38-00038	Ch.inox c/tubo e man.piatta inox / S.s. kit with s.s. flat lever - with s.s. tube
38-00040	Ch.inox sciolta c/man.Delta inox / S.s. kit with s.s. "delta" lever - without tube
38-00042	Ch.inox c/tubo e man.Delta inox / S.s. kit with s.s. "delta" lever - with s.s. tube
38-00041	Ch.inox sciolta c/man.c/chiave inox / S.s. kit with s.s.door handle with key-without tube
38-00043	Ch.inox c/tubo e man.c/chiave inox / S.s. kit with s.s.door handle with key-with s.s. tube
38-00059	Ch.zinc.sciolta c/man.piatta zinc. / Galv.kit with galv.flat lever-without tube
38-00058	Ch.zinc.c/tubo e man.piatta zinc. / Galv.kit with galv.flat lever-with galv.tube
38-00068	Ch.zinc.sciolta c/man.Delta zinc. / Galv.kit with galv."delta"lever-without tube

**38-00053**  
Scontro inox / Stainless steel keeper

**38-00070**  
Scontro zincato / Galvanized keeper

**38-00047**  
Rondella inox / Stainless steel wash

**38-00073**  
Rondella zincata / Galvanized wash

**38-00057**  
Boccola nylon / Nylon bush

**38-00064**  
Tubo Ø22x2 inox L=3000  
Stainless steel tube Ø22x2 L=3000

**38-00078**  
Tubo Ø22x2 zincato L=3000  
Galvanized tube Ø22x2 L=3000

**38-00060**  
Man.c/chiave inox L=251  
S.s.door handle with key L=251

**38-00054**  
Arpione inox / Stainless steel cam

**38-00071**  
Arpione zincato / Galvanized cam

**38-00055**  
Guida asta inox H.58 / S.s.steel clamp H.58

**38-00072**  
Guida asta zinc.H.58 / Galv. clamp H.58

**38-00062**  
Man.Delta inox L=310  
S.s.Delta lever L=310

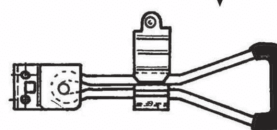
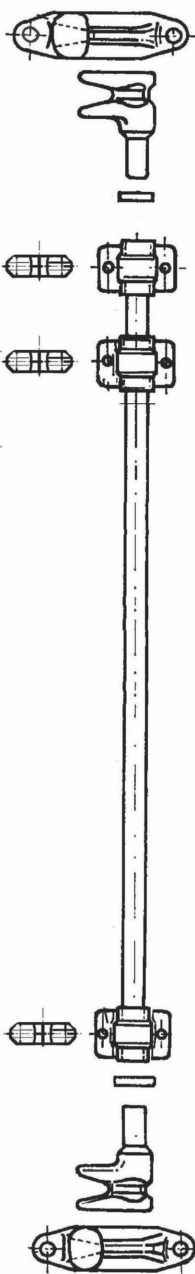
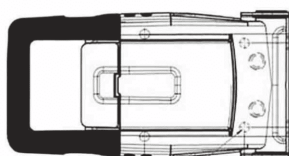
**38-00077**  
Man.Delta zinc.L=310  
Galv.Delta lever L=310

**38-00063**  
Kit ferma leva inox / Kit S.s.lever stay

**38-00075**  
Kit ferma leva zinc./ Kit Galv.lever stay

**38-00066**  
Man.Piatta inox L=334 c/imp.rivestita  
S.s.flat lever with coated grip L=334

**38-00067**  
Man.Piatta zinc.L=334 c/imp.rivestita  
Galv.flat lever with coated grip L=334

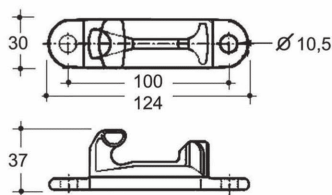


## Componenti per chiusure esterne tubo D.22

### Components for external door handles for D.22 tube

Art. 38-00044/C		
Kit inox per chius. D. 22 composto Kit for S.s.external door handles D. 22 tube		
A	Art. 38-00053	Nr. 2
B	Art. 38-00054	Nr. 2
C	Art. 38-00047	Nr. 2
D	Art. 38-00055	Nr. 3
E	Art. 38-00057	Nr. 3

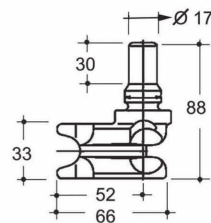
Art. 38-00070/C		
Kit zinc. per chius. D.22 composto Kit for Galv.external door handles D. 22 tube		
A	Art. 38-00070	Nr. 2
B	Art. 38-00071	Nr. 2
C	Art. 38-00073	Nr. 2
D	Art. 38-00072	Nr. 3
E	Art. 38-00057	Nr. 3



(A)

**Art. 38-00053**  
Scontro inox  
Stainless steel keeper  
(Kg. 0,340)

**Art. 38-00070**  
Scontro zincato  
Galvanized keeper  
(Kg.0,300)



(B)

**Art. 38-00054**  
Arpione inox  
Stainless steel cam  
(Kg. 0,340)

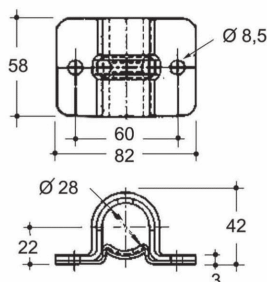
**Art. 38-00071**  
Arpione zincato  
Galvanized cam  
(Kg.0,280)



(C)

**Art. 38-00047**  
Rondella inox  
Stainless steel wash  
(kg. 0,029)

**Art. 38-00073**  
Rondella zincata  
Galvanized wash



(D)

**Art. 38-00055**  
Guida asta inox H.58  
S.s.steel clamp H.58  
( Kg. 0,280 )

**Art. 38-00072**  
Guida asta zinc.H.58  
Galv. clamp H.58  
( Kg. 0,280 )



(E)

**Art. 38-00057**  
Boccola nylon  
Nylon bush

( Kg. 0,004 )

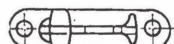
## Chiusure esterne tubo D. 22 - BIG 6

## External door handles for D.22 tube- BIG 6

Art.	Descrizione / Description
38-00048	Ch.inox sciolta c/man.piatta inox / S.s. kit with s.s. flat lever - without tube
38-00046	Ch.inox c/tubo e man.piatta inox / S.s. kit with s.s. flat lever - with s.s. tube
38-00049	Ch.inox sciolta c/man.Delta inox / S.s. kit with s.s. "delta" lever - without tube
38-00051	Ch.inox c/tubo e man.Delta inox / S.s. kit with s.s. "delta" lever - with s.s. tube
38-00050	Ch.inox sciolta c/man.c/chiave inox / S.s. kit with s.s.door handle with key-without tube
38-00052	Ch.inox c/tubo e man.c/chiave inox / S.s. kit with s.s.door handle with key-with s.s. tube

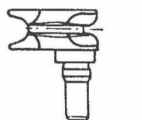
38-00053

Scontro inox / Stainless steel keeper



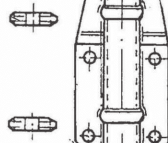
38-00054

Arpione inox / Stainless steel cam

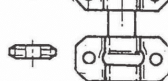


38-00057

Boccola nylon / Nylon bush



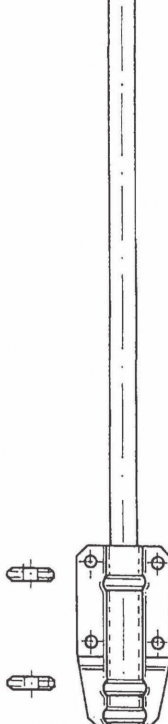
38-00056

Guida asta inox chius.BIG 6 H=163  
S.s.clamp BIG 6 H=163

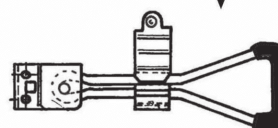
38-00055

Guida asta inox H.58  
S.s.steel clamp H.58

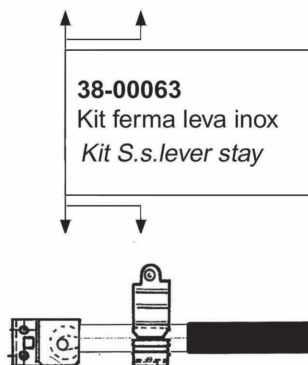
38-00064

Tubo Ø22x2 inox L=3000  
Stainless steel tube Ø22x2 L=3000

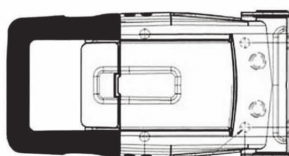
38-00062

Man.Delta inox L=310  
S.s.Delta lever L=310

38-00063

Kit ferma leva inox  
Kit S.s.lever stay

38-00060

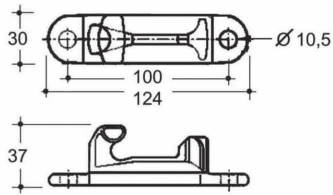
Man.c/chiave inox L=251  
S.s.door handle with key L=251

38-00066

Man.Piatta inox L=334 c/imp.rivestita  
S.s.flat lever with coated grip L=334

**Componenti per chiusure esterne tubo D.22 BIG 6**

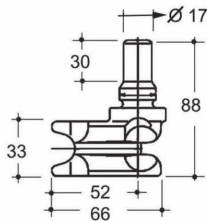
**Components for external door handles for D.22 BIG 6**



(A)

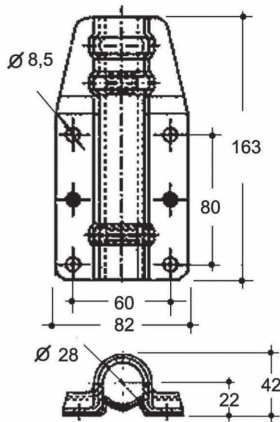
**Art. 38-00053** (Kg. 0,340)  
Scontro inox  
Stainless steel keeper

Art. 38-00053/C		
Kit inox per chius. D. 22 BIG6		composto
Kit for S.s.external door handles D. 22tube BIG6		
<b>A</b>	<b>Art. 38-00053</b>	<b>Nr. 2</b>
<b>B</b>	<b>Art. 38-00054</b>	<b>Nr. 2</b>
<b>C</b>	<b>Art. 38-00056</b>	<b>Nr. 2</b>
<b>D</b>	<b>Art. 38-00055</b>	<b>Nr. 1</b>
<b>E</b>	<b>Art. 38-00057</b>	<b>Nr. 5</b>



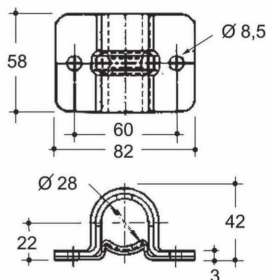
(B)

**Art. 38-00054** (Kg. 0,340)  
Arpione inox  
Stainless steel cam



(C)

**Art. 38-00056** (Kg.0,640)  
Guida asta inox chius.BIG6 H.163  
S.s. clamp BIG 6 H=163



(D)

**Art. 38-00055** (Kg. 0,280)  
Guida asta inox H.58  
S.s. steel clamp H.58



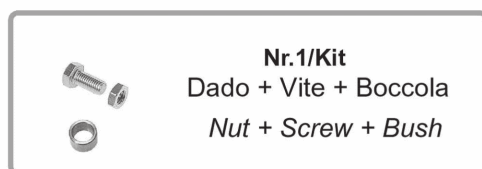
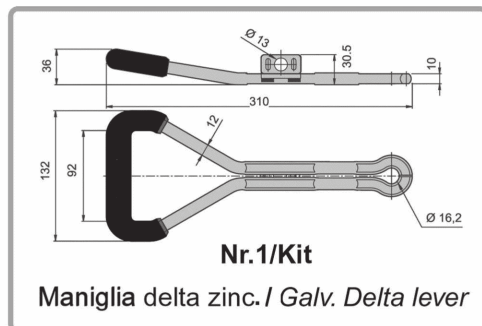
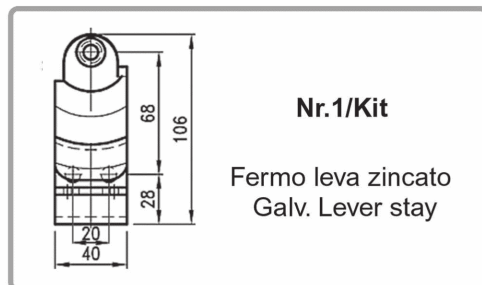
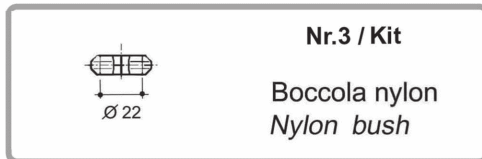
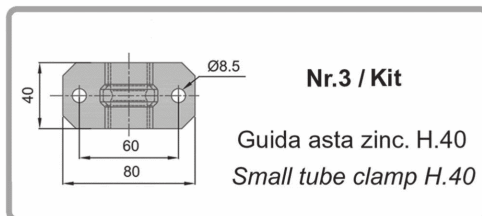
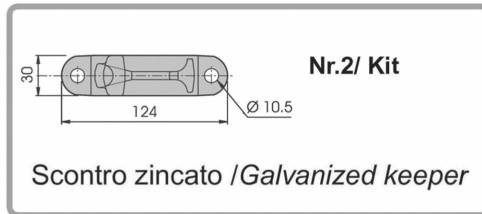
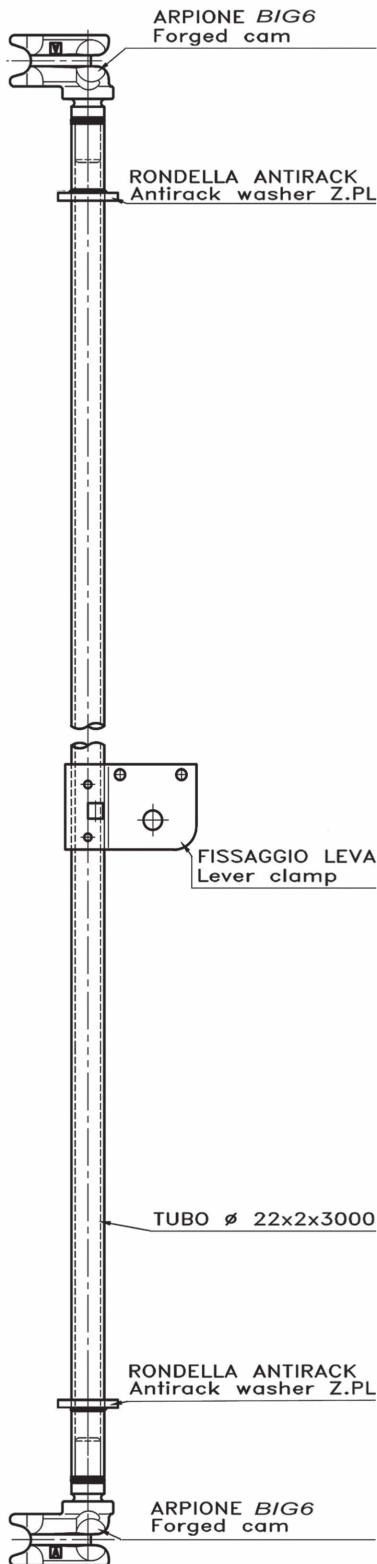
(E)

**Art. 38-00057** (Kg. 0,004)  
Boccola nylon  
Nylon bush

## Kit chiusura zincata con tubo D. 22 e maniglia Delta (assemblata)

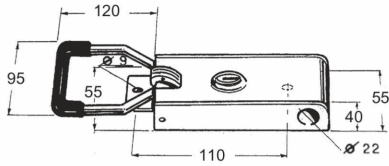
Galv. kit with tube d.22 and. Delta lever (assembled)

Art. 38-00069



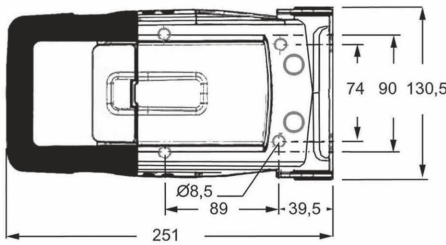
## Componenti per chiusure esterne tubo D.22

### Components for external door handles for D.22 tube



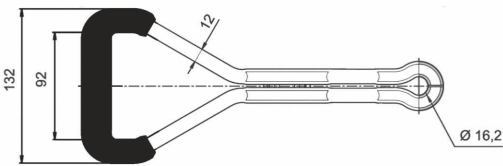
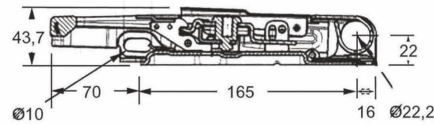
**Art. 38-00061**  
Maniglia piccola con chiave inox  
S.s. small door handle with key

**In esaurimento / In exhaustion**



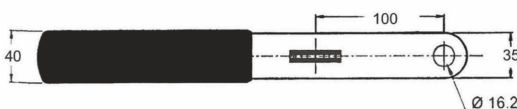
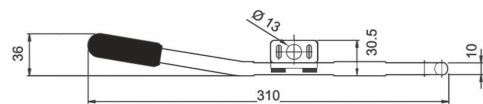
**Art. 38-00060** Maniglia c/chiave inox L=251

Stainless steel door handle with key L=251 (Kg. 2,230)



**Art. 38-00062** Maniglia Delta inox L=310  
**Art. 38-00077** Maniglia Delta zinc L=310

Stainless steel Delta lever L=310 (Kg. 0,680)  
Galvanized Delta lever L=310 (Kg. 0,680)

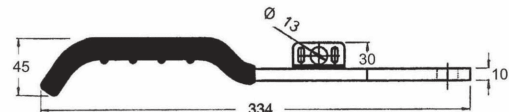


**Art. 38-00066**  
Maniglia Piatta inox L=334 c/impugn.rivestita

S.s.flat lever with coated grip L=334

**Art. 38-00067**  
Maniglia Piatta zincata L=334 c/impugn.rivestita

Galvanized flat lever with coated grip L=334

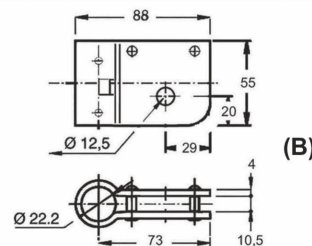


<b>Art. 38-00063</b>	
<b>38-00063/A</b>	<b>Nr. 1</b>
<b>38-00063/B</b>	<b>Nr. 1</b>



**Art. 38-00063/A** (inox / S.s.)  
**Art. 38-00075/A** (zinc./Galv.) (kg.0,240)  
Fermo leva per maniglie Delta e Piatta  
lever stay ( Delta and Flat )

<b>Art. 38-00075</b>	
<b>38-00075/A</b>	<b>Nr. 1</b>
<b>38-00075/B</b>	<b>Nr. 1</b>



**Art. 38-00063/B** (inox / S.s.) (Kg.0,290)  
**Art. 38-00075/B** (zinc./Galv.)  
Fissaggio leva per maniglia Delta e Piatta  
kit lever clamp (Delta and Flat)

## Chiusure esterne tubo D. 27

## External door handles for D. 27 tube

Art.	Descrizione / Description
38-00079	Ch.inox sciolta c/man.piatta inox / S.s. kit with s.s. flat lever - without tube
38-00076	Ch.inox c/tubo e man.piatta inox / S.s. kit with s.s. flat lever - with s.s. tube
38-00080	Ch.inox sciolta c/man.Delta inox / S.s. kit with s.s. "delta" lever - without tube
38-00082	Ch.inox c/tubo e man.Delta inox / S.s. kit with s.s. "delta" lever - with s.s. tube
38-00081	Ch.inox sciolta c/man c/chiave inox / S.s. kit with s.s.door handle with key-without tube
38-00083	Ch.inox c/tubo e man. c/chiave inox / S.s. kit with s.s.door handle with key-with s.s. tube
38-00114	Ch.zinc.sciolta c/man.piatta zinc. / Galv.kit with galv.flat lever-without tube
38-00113	Ch.zinc.c/tubo e man.piatta zinc. / Galv.kit with galv.flat lever-with galv.tube
38-00115	Ch.zinc.sciolta c/man.Delta zinc. / Galv.kit with galv."delta"lever-without tube

38-00105

Scontro inox / Stainless steel keeper

38-00141

Scontro zincato / Galvanized keeper

38-00088

Rondella inox / Stainless steel wash

38-00124

Rondella zincata / Galvanized wash

38-00089

Boccola nylon / Nylon bush

38-00055

Guida asta inox H.58 / S.s.clamp H=58

38-00072

Guida asta zinc.H.58 / Galv.clamp H=58

38-00092

Tubo Ø 27x2,5 inox L=3000

Stainless steel tube Ø27x2,5 L=3000

38-00130

Tubo Ø 27x2,5 zincato L=3000

Galvanized tube Ø27x2,5 L=3000

38-00095

Maniglia c/chiave inox L=305

S.s. door handle with key L=305

38-00104

Arpione inox / Stainless steel cam

38-00140

Arpione zincato / Galvanized cam

38-00086

Guida asta inox H.104/ S.s.steel clamp H.104

38-00122

Guida asta zinc.H.104/Galv. clamp H.104

38-00062

Man.Delta inox L=310

S.s.Delta lever L=310

38-00077

Man.Delta zinc.L=310

Galv.Delta lever L=310

38-00091

Kit ferma leva inox / Kit S.s. lever stay

38-00127

Kit ferma leva zinc./ Kit Galv.lever stay

38-00066

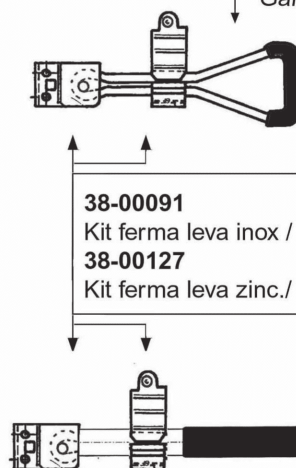
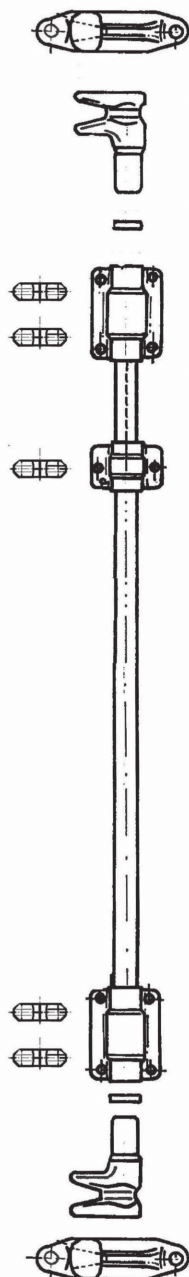
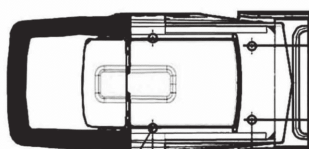
Man.Piatta inox L=334 c/imp.rivestita

S.s.flat lever with coated grip L=334

38-00067

Man.Piatta zinc.L=334 c/imp.rivestita

Galv.flat lever with coated grip L=334

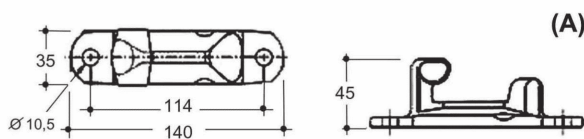


## Componenti per chiusure esterne tubo D. 27

### Components for external door handles for D. 27

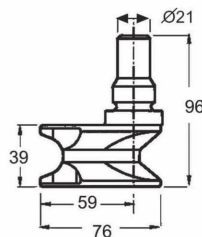
Art. 38-00084/C		
Kit inox per chius. D. 27 composto Kit for S.s.external door handles D.27 tube		
A	Art. 38-00105	Nr. 2
B	Art. 38-00104	Nr. 2
C	Art. 38-00086	Nr. 2
D	Art. 38-00055	Nr. 1
E	Art. 38-00088	Nr. 2
F	Art. 38-00089	Nr. 5

Art. 38-00120/C		
Kit zinc. per chius. D. 27 composto Kit for Galv.external door handles D. 27 tube		
A	Art. 38-00141	Nr. 2
B	Art. 38-00140	Nr. 2
C	Art. 38-00122	Nr. 2
D	Art. 38-00072	Nr. 1
E	Art. 38-00124	Nr. 2
F	Art. 38-00089	Nr. 5



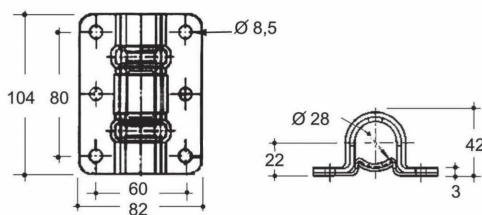
**Art. 38-00105**  
Scontro inox  
Stainless steel keeper  
(Kg. 0,500)

**Art. 38-00141**  
Scontro zincato  
Galvanized keeper  
(Kg. 0,500)



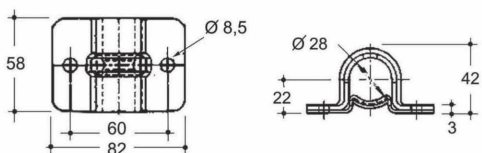
**Art. 38-00104**  
Arpione inox  
Stainless steel cam  
(Kg.0,540)

**Art. 38-00140**  
Arpione zincato  
Galvanized cam  
(Kg.0,540)



**Art. 38-00086**  
Guida asta inox H.104  
S.s. steel clamp H.104  
(Kg.0,440)

**Art. 38-00122**  
Guida asta zinc. H.104  
Galv. clamp H.104  
(Kg.0,440)



**Art. 38-00055**  
Guida asta inox H.58  
S.s. clamp H=58  
(Kg.0,280)

**Art. 38-00072**  
Guida asta zinc. H.58  
Galv. clamp H=58  
(kg.0,280)



**Art. 38-00088**  
Rondella inox  
Stainless steel wash  
(Kg.0,025)

**Art. 38-00124**  
Rondella zincata  
Galvanized wash  
(Kg.0,025)



**Art. 38-00089**  
Boccola nylon / Nylon bush  
(Kg.0,004)

## Chiusure esterne tubo D.27 BIG 4

## External door handles for D.27 tube BIG 4

Art.	Descrizione / Description
38-00099	Ch.inox sciolta c/man.piatta inox / S.s. kit with s.s. flat lever - without tube
38-00098	Ch.inox c/tubo e man.piatta inox / S.s. kit with s.s. flat lever - with s.s. tube
38-00100	Ch.inox sciolta c/man.Delta inox / S.s. kit with s.s. "delta" lever - without tube
38-00102	Ch.inox c/tubo e man.Delta inox / S.s. kit with s.s. "delta" lever - with s.s. tube
38-00101	Ch.inox sciolta c/man c/chiave inox / S.s. kit with s.s.door handle with key-without tube
38-00103	Ch.inox c/tubo e man. c/chiave inox / S.s. kit with s.s.door handle with key-with s.s. tube
38-00134	Ch.zinc.sciolta c/man.piatta zinc. / Galv.kit with galv.flat lever-without tube
38-00133	Ch.zinc.c/tubo e man.piatta zinc. / Galv.kit with galv.flat lever-with galv.tube
38-00135	Ch.zinc.sciolta c/man.Delta zinc. / Galv.kit with galv."delta"lever-without tube
38-00137	Ch.zinc.c/tubo e man.Delta zinc. / Galv.kit with galv."delta"lever-with galv.tube

38-00105

Scontro inox / Stainless steel keeper

38-00141

Scontro zincato / Galvanized keeper



38-00104

Arpione inox / Stainless steel cam

38-00140

Arpione zincato / Galvanized cam



38-00089

Boccola nylon / Nylon bush



38-00056

Guida asta inox H.163/S.s.clamp h.163

38-00142

Guida asta zinc. H.163/Galv.clamp h.163

38-00055

Guida asta inox H.58 / S.s.clamp H=58

38-00072

Guida asta zinc.H.58 /Galv.clamp H=58



38-00062

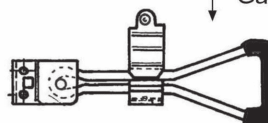
Man.Delta inox L=310

S.s.Delta lever L=310

38-00077

Man.Delta zinc.L=310

Galv.Delta lever L=310



38-00092

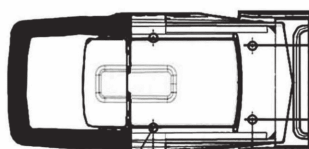
Tubo Ø 27x2,5 inox L=3000

Stainless steel tube Ø27x2,5 L=3000

38-00130

Tubo Ø 27x2,5 zincato L=3000

Galvanized tube Ø27x2,5 L=3000



38-00091

Kit ferma leva inox / Kit S.s. lever stay

38-00127

Kit ferma leva zinc./ Kit Galv.lever stay



38-00095

Maniglia c/chiave inox L=305

S.s. door handle with key L=305



38-00066

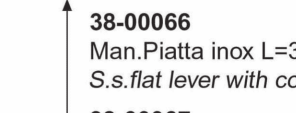
Man.Piatta inox L=334 c/imp.rivestita

S.s.flat lever with coated grip L=334

38-00067

Man.Piatta zinc.L=334 c/imp.rivestita

Galv.flat lever with coated grip L=334

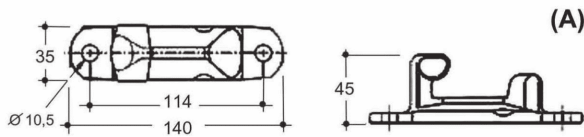


## Componenti per chiusure esterne tubo D. 27 BIG 4

### Components for external door handles for D. 27 BIG 4

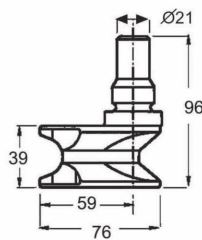
Art. 38-00104/C		
Kit inox per chius. D. 27 BIG4 composto : Kit for S.s.external door handles D.27 tube		
A	Art. 38-00105	Nr. 2
B	Art. 38-00104	Nr. 2
C	Art. 38-00056	Nr. 2
D	Art. 38-00055	Nr. 1
E	Art. 38-00089	Nr. 5

Art. 38-00140/C		
Kit zinc. per chius. D. 27 BIG4 composto : Kit for Galv.external door handles D. 27 tube		
A	Art. 38-00141	Nr. 2
B	Art. 38-00140	Nr. 2
C	Art. 38-00142	Nr. 2
D	Art. 38-00072	Nr. 1
E	Art. 38-00089	Nr. 5



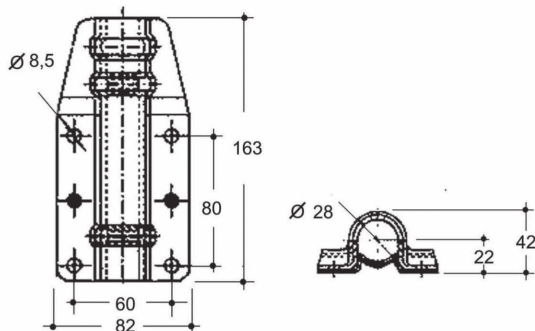
**Art. 38-00105**  
Scontro inox  
Stainless steel keeper  
(Kg. 0,500)

**Art. 38-00141**  
Scontro zincato  
Galvanized keeper  
(Kg. 0,500)



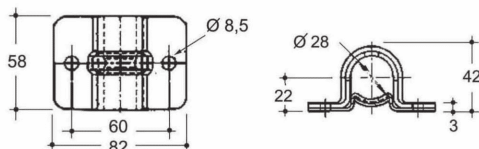
**Art. 38-00104**  
Arpione inox  
Stainless steel cam  
(Kg.0,540)

**Art. 38-00140**  
Arpione zincato  
Galvanized cam  
(Kg.0,540)



**Art. 38-00056**  
Guida asta inox H.163  
S.s. clamp H.163  
(Kg.0,640)

**Art. 38-00142**  
Guida asta zinc. H.163  
Galv.clamp H.163  
(Kg.0,640)



**Art. 38-00055**  
Guida asta inox H.58  
S.s.clamp H=58  
(Kg.0,280)

**Art. 38-00072**  
Guida asta zinc. H.58  
Galv.clamp H=58  
(kg.0,280)

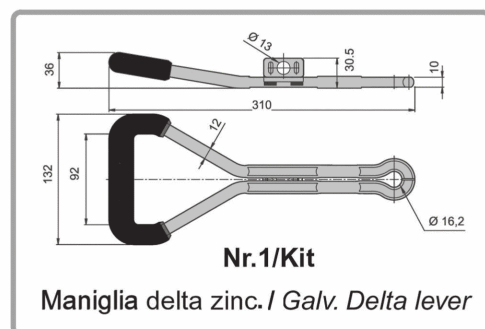
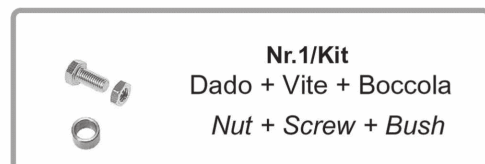
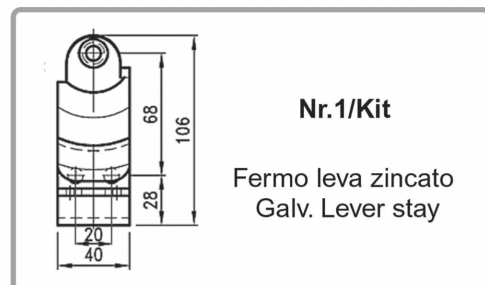
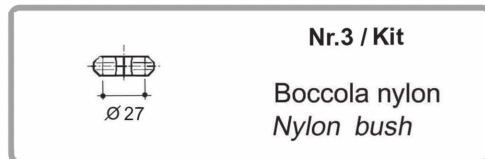
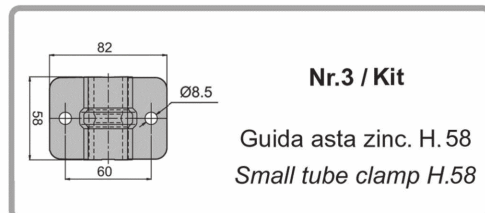
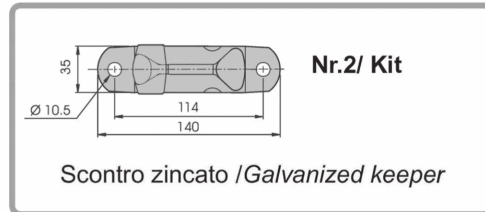
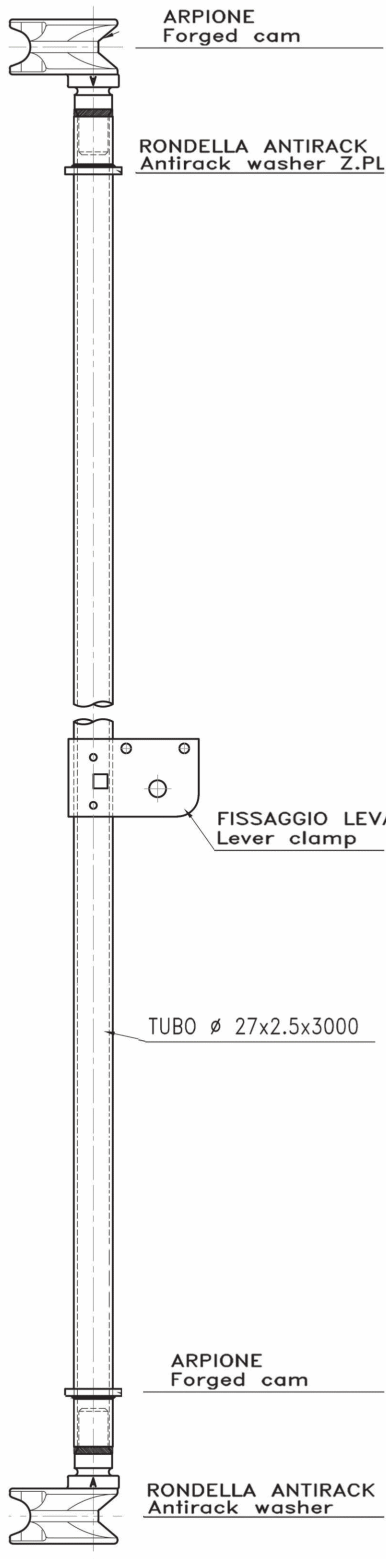


**Art. 38-00089**  
Boccola nylon / Nylon bush  
(Kg.0,004)

## Kit chiusura zincata con tubo D. 27 e maniglia Delta (assemblata)

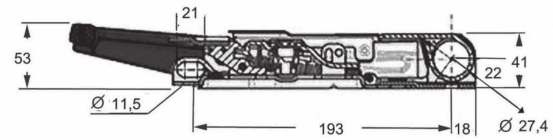
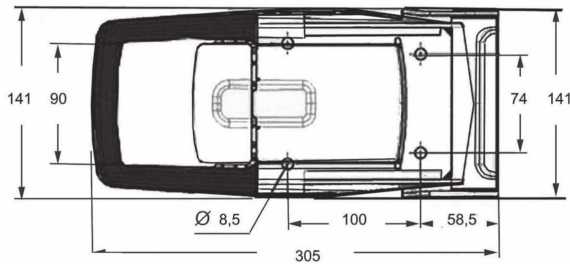
Galv. kit with tube d.27 and. Delta lever (assembled)

Art. 38-00117

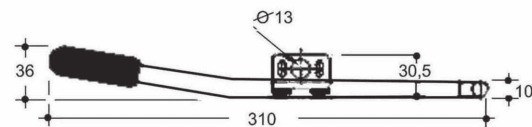
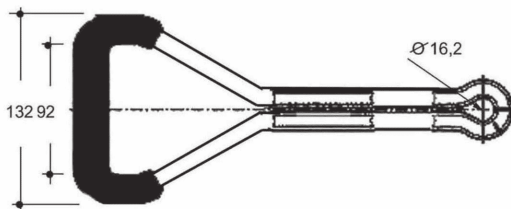


## Componenti per chiusure esterne tubo D.27

### Components for external door handles for D.27 tube



**Art. 38-00095** Maniglia c/chiave inox L=305 *Stainless steel door handle with key L=305* (Kg. 2,055)

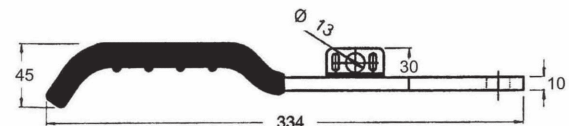
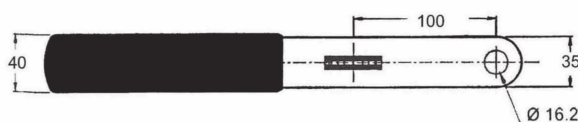


**Art. 38-00062** Maniglia Delta inox L=310 *Stainless steel Delta lever L=310* (Kg. 0,680)

*Stainless steel Delta lever L=310* (Kg. 0,680)

**Art. 38-00077** Maniglia Delta zinc L=310 *Galvanized Delta lever L=310* (Kg. 0,680)

*Galvanized Delta lever L=310* (Kg. 0,680)



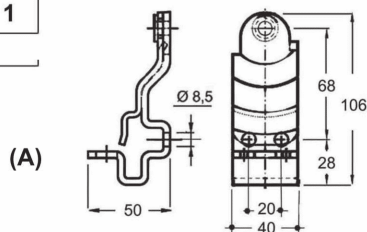
**Art. 38-00066** Maniglia Piatta inox L=334 c/impugn.rivestita *S.s.flat lever with coated grip L=334* (Kg.0,970)

*S.s.flat lever with coated grip L=334* (Kg.0,970)

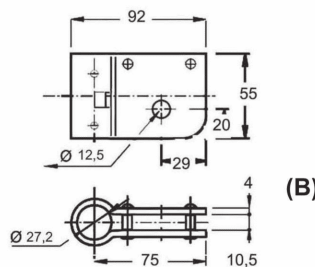
**Art. 38-00067** Maniglia Piatta zincata L=334 c/impugn.rivestita *Galvanized flat lever with coated grip L=334*

*Galvanized flat lever with coated grip L=334*

<b>Art. 38-00091</b>	
<b>38-00091/A</b>	<b>Nr. 1</b>
<b>38-00091/B</b>	<b>Nr. 1</b>



<b>Art. 38-00127</b>	
<b>38-00127/A</b>	<b>Nr. 1</b>
<b>38-00127/B</b>	<b>Nr. 1</b>

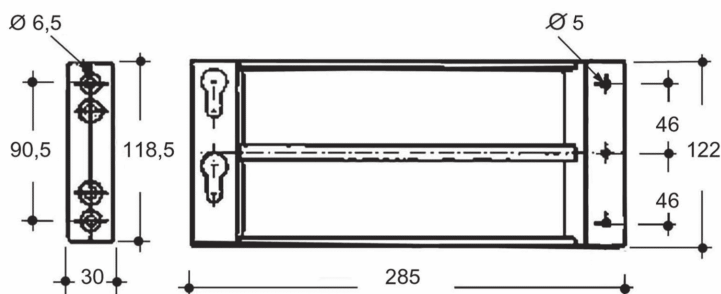


**Art. 38-00091/A** (inox / S.s.) (kg.0,240)  
**Art. 38-00127/A** (zinc./galv.)

**Art. 38-00091/B** (inox / S.s.) (Kg.0,290)  
**Art. 38-00127/B** (zinc./galv.)

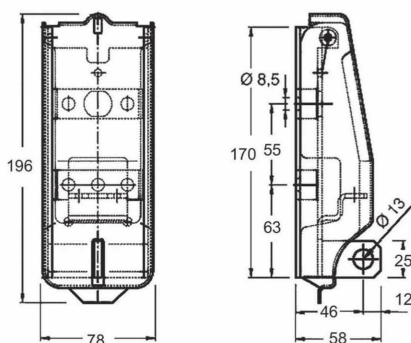
Fermo leva per maniglie Delta e Piatta  
*lever stay (Delta and Flat)*

Fissaggio leva per maniglia Delta e Piatta  
*kit lever clamp (Delta and Flat)*

**Accessori per chiusure esterne tubo D.22 e D.27*****Accessories for external handles with tubes D.22 and D.27***

**Art. 38-00034** (Kg. 0,115)  
Coprimaniglia nero in materiale plastico  
sp.5 per chiusure D. 22 e D. 27

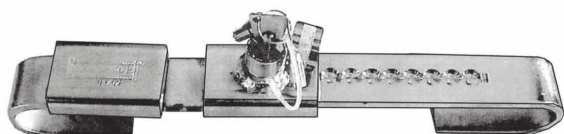
*Plastic handle cover (thickness 5 mm) for  
external handles with tubes D.22 e D.27*



**Art. 38-00065**  
Coperchio Fermo leva inox per chius.D.22 e D.27  
*S.s.spring cover for lever stay for external handles  
(tubes D.22 and D.27)*

(Kg.0,750)

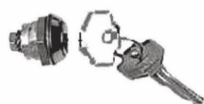
**Art. 38-00096**  
Coperchio Fermo leva zincato per chiusure D. 22 e D. 27  
*Galv.spring cover for lever stay for external handles  
(tubes D.22 and D.27)*



**Art. 38-00097** (Kg. 2,586)

Sicurezza per chius. Container inox  
DIM: da 250mm. a 400mm.

*S.s.safety closure for containers  
DIM: da 250mm. a 400mm.*



**Art. 38-00074** (Kg.0,050)

Nottolino chiave h.13mm per chiusure (D.16 - D.22 - D.27)

*Key barrel H.13mm for external handles (D.16 - D.22 - D.27)*

## Kit chiusura sottoporta per asta D.18

### Kit under door locking device for tube D.18mm.

Art. 38-00159/CH		Kit trattamento geomet Kit geomet treatment		
Rif.	Art.	Descrizione	Description	Nr.
A	38-00159CH/1	Scontro	Keeper	1
B	38-00159CH/2	Arpione	Cam	1
C	38-00159CH/3	Maniglia	Lever	1
D	38-00159CH/5	Base	Base	1



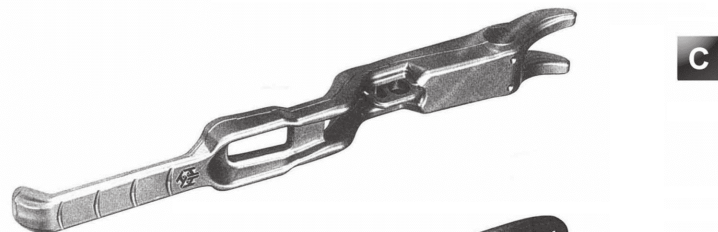
A



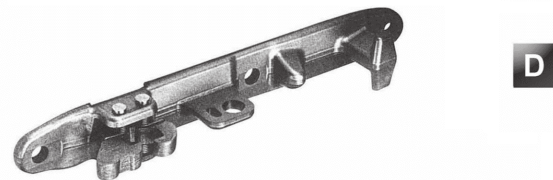
B

Art.25-00144  
Tondo D.18 zincato  
(non compreso nel Kit)

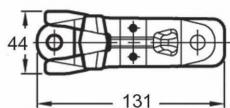
Galv. Round D.18  
(not included in the Kit)



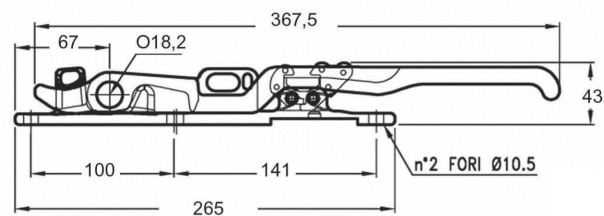
C



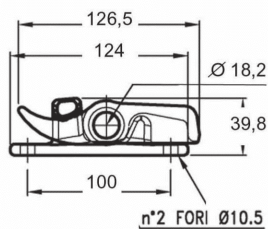
D



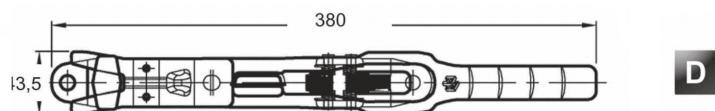
A



C



B



D

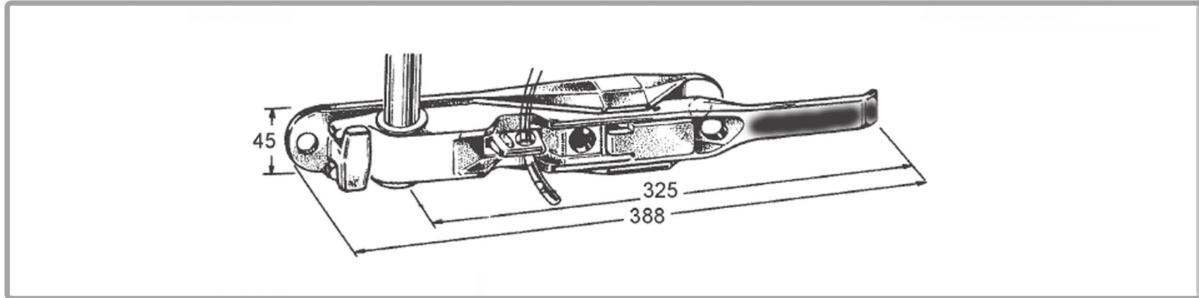
## Accessori / Accessories



**Art. 38-00159CH/4**  
Protezione pulsante geomet  
Push button protection  
(geomet treatment)  
(Kg. 0,240)



**Art. 38-00159/6**  
Spina 5X30 mm. inox  
Stainless steel spiro pin 5x30 mm.  
(Kg. 0,003)

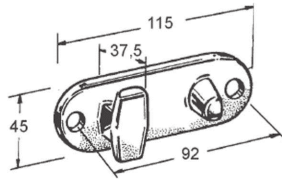
Kit chiusura sottoporta "bassa" zincata per asta D.18Galvanized Kit under door locking device "low" for tube D.18

Art. 38-00154

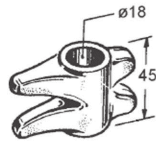
Kit "bassa" zincata  
Galvanized Kit "low"

Rif.	Art.	Descrizione / Description	Nr.
A	38-00154/1	Scontro <i>Keeper</i>	1
B	38-00154/2	Arpione <i>Cam</i>	1
C	38-00154/4	Base <i>Base</i>	1
D	38-00154/3	Maniglia <i>Lever</i>	1

A



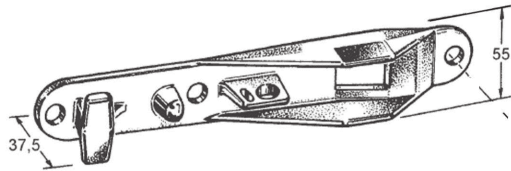
B



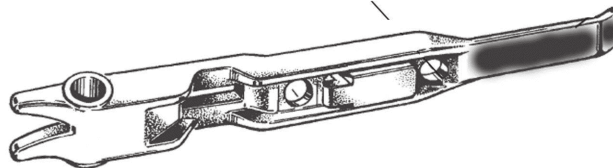
Art.25-00144

Tondo D.18 zincato  
(non compreso nel Kit)Galv. Round D.18  
(not included in the Kit)

C

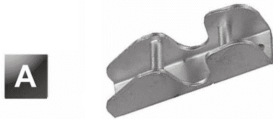


D



## Kit chiusura sottoporta "swiss" per asta D.18

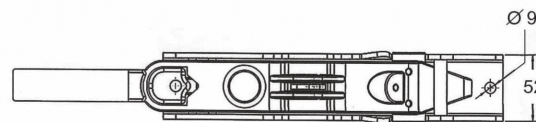
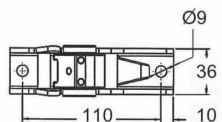
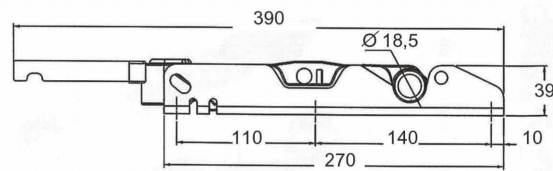
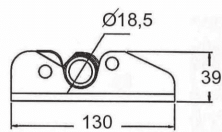
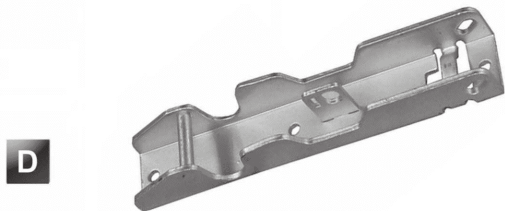
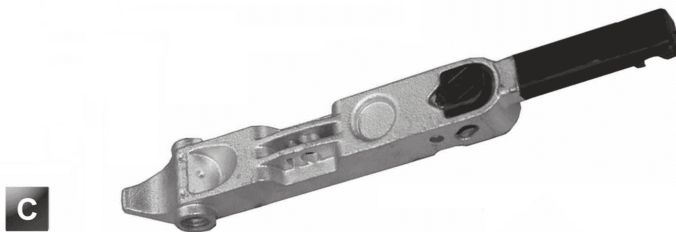
### Kit under door locking device "swiss" for tube D.18

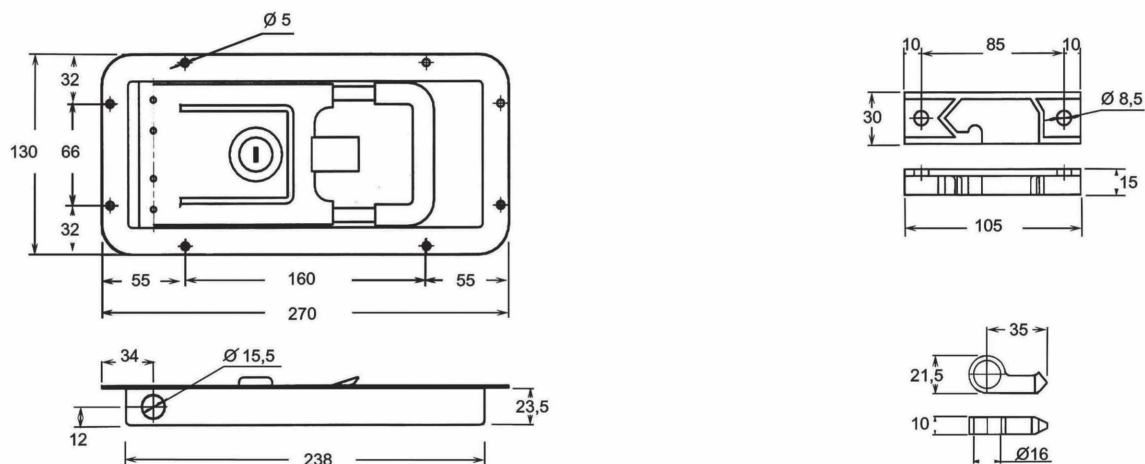


**Art.25-00144**  
Tondo D.18 zincato  
(non compreso nel Kit)

Galv. Round D.18  
(not included in the Kit)

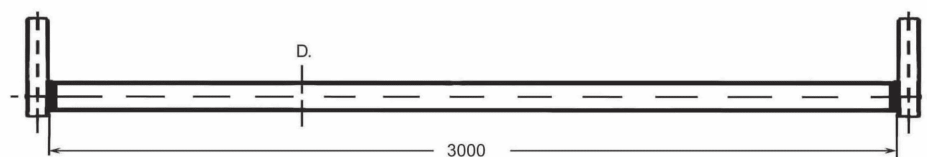
Art. 38-00155 Kit "SWISS" trattamento dacromet Kit "swiss"dacromet treatment			
Rif.	Art.	Descrizione / Description	Nr.
A	38-00155/1	Scontro <i>Keeper</i>	1
B	38-00155/2	Arpione <i>Cam</i>	1
C	38-00155/3	Maniglia <i>Lever</i>	1
D	38-00155/4	Base <i>Base</i>	1



**Chiusure da incasso (ASTE D15) *Recessed lock (FOR TUBES D.15)*****Art. 38-00163**

(Kg. 1,075)

Chiusura da incasso inox H.23,5 per asta D.15 completa di scontro e arpione

S.s. *recessed lock for tube D.15 complete with cam and keeper H=23,5***Aste zinc.L=3000 complete di arpioni****Galv. bar assembled with welded cams L=3000****Art. 38-00191**

Asta L=3000 zinc.D.15 con arpioni saldati zinc.

(Kg.4,250)

*Galv. bar assembled with welded cams D.15 L=3000***Art. 38-00192**

Asta L=3000 zinc.D.16 con arpioni saldati zinc.

(Kg.4,700)

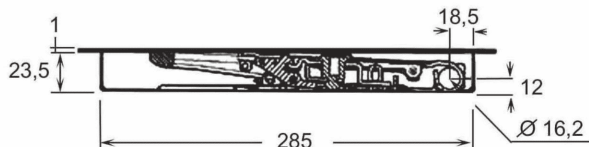
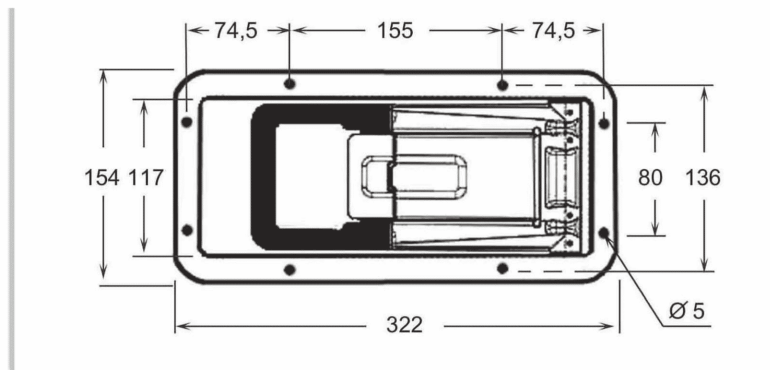
*Galv. bar assembled with welded cams D.16 L=3000***Art. 38-00193**

Asta L=3000 zinc.D.17 con arpioni saldati zinc.

*Galv. bar assembled with welded cams D.17 L=3000*

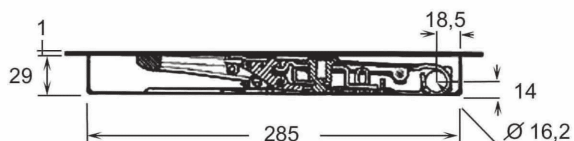
## Chiusure da incasso ( ASTE D.16 )

### Recessed lock (FOR TUBES D.16)



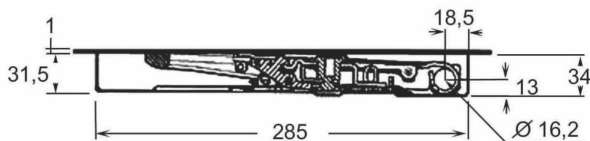
**Art. 38-00160**

Chiusura da incasso INOX H.23,5  
per asta D.16  
S.s.recessed lock for tube D.16 H.23,5  
(Kg.1,178)



**Art. 38-00161**

Chiusura da incasso INOX H.29  
per asta D.16  
S.s.recessed lock for tube D.16 H.29  
(Kg.1,250)



**Art. 38-00162**

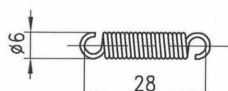
Chiusura da incasso INOX H.34  
per asta D.16  
S.s.recessed lock for tube D.16 H.34  
(Kg.1,260)



**Art. 38-00074**

Nottolino chiave h.13mm per chiusure  
Key barrel H.13mm

(Kg.0,050)

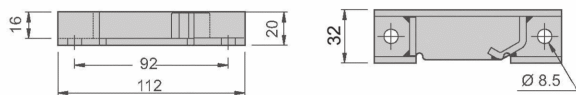


**Art. 38-00164**

Molla inox per sportellini  
Stainless steel flap spring

(Kg.0,005)

## Arpioni e scontri per chiusure da incasso

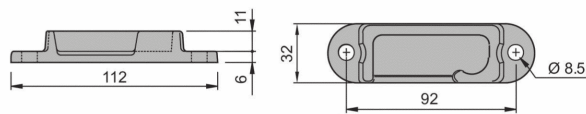
Cams and Keepers for recessed lock**Art. 38-00169**

Scontro in lamiera DX inox 16 mm.  
Sheet steel keeper (right) working depth 16 mm.

**Art. 38-00170**

Scontro in lamiera SX inox 16 mm.  
Sheet steel keeper (left) working depth 16 mm.

(Kg.0,160)

**Art. 38-00166**

Scontro forgiato DX inox 11 mm.  
Stainless steel forged right keeper 11 mm.

**Art. 38-00167**

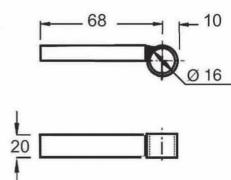
Scontro forgiato SX inox 11 mm.  
Stainless steel forged left keeper 11 mm.

(kg. 0,220)

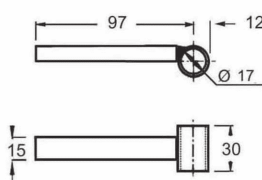
**Art. 38-00168**

Arpione forgiato inox  
Stainless steel forged cam

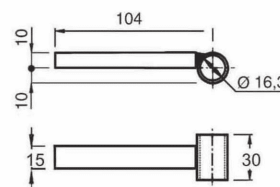
(kg. 0,066)

**Art. 38-00194**

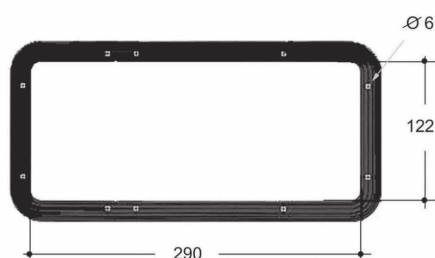
Arp.centrale zinc.per asta D.16mm.  
Galv.central cam for tube D16mm.

**Art. 38-00195**

Arp.centrale inox per asta D.17mm.  
S.s.central cam for tube D17mm.

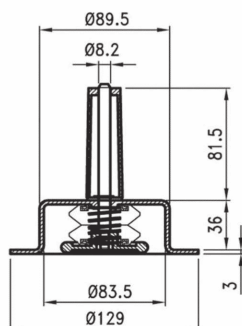
**Art. 38-00187**

Arp.centrale inox per asta D.16mm.  
S.s.central cam for tube D16mm.

**Art. 38-00196**

Guarnizione nera in nylon per vaschetta (per chius. 38-00160/161/162)  
Nylon seal for insertion under the lip of the cup  
(to prevent infiltration of water) (for recessed lock 38-00160/161/162)

(Kg.0,026)

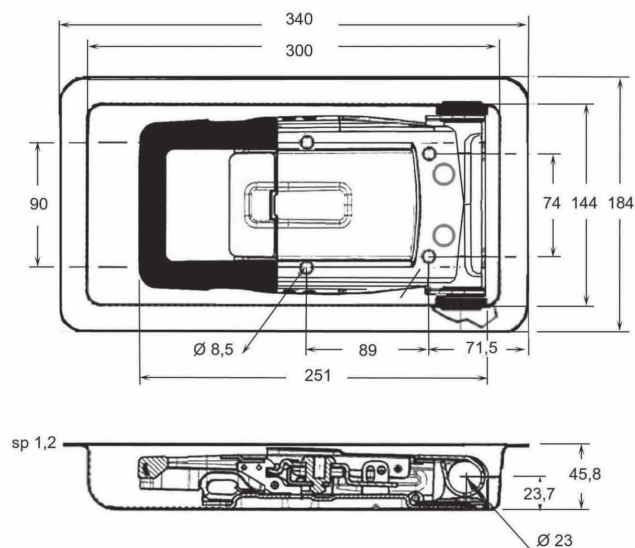
**Art. 38-00197**

Pomello completo per apertura dall'interno  
( per chiusure 38-00160 / 161 / 162 )

(Kg. 0,145)

Complete internal opening device  
( for recessed lock 38-00160 / 161 / 162 )

## Chiusure da incasso (Asta D.22) *Recessed door locks(Tube D.22)*



**Art. 38-00204**

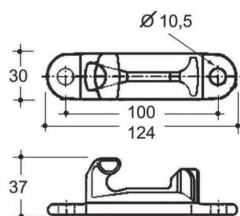
Chiusura da incasso inox H. 45,8 per asta D.22

(Kg.3,090)

*S.steel recessed door lock H=45,8 (tube D.22)*

## Arpioni / scontri / Guida Asta ( asta D.22 )

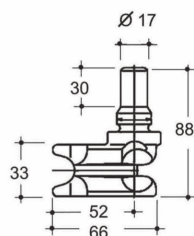
### *Cams / Keepers / Tube guide ( tube D.22)*



**Art. 38-00053**

Scontro inox  
*Stainless steel keeper*

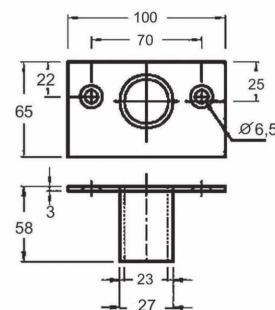
(Kg. 0,340)



**Art. 38-00054**

Arpione inox  
*Stainless steel cam*

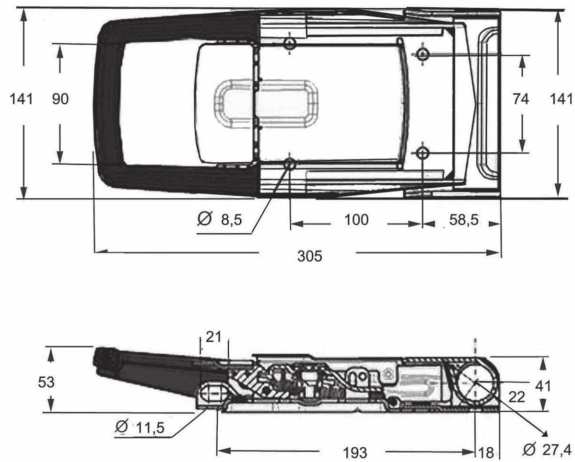
(Kg. 0,340)



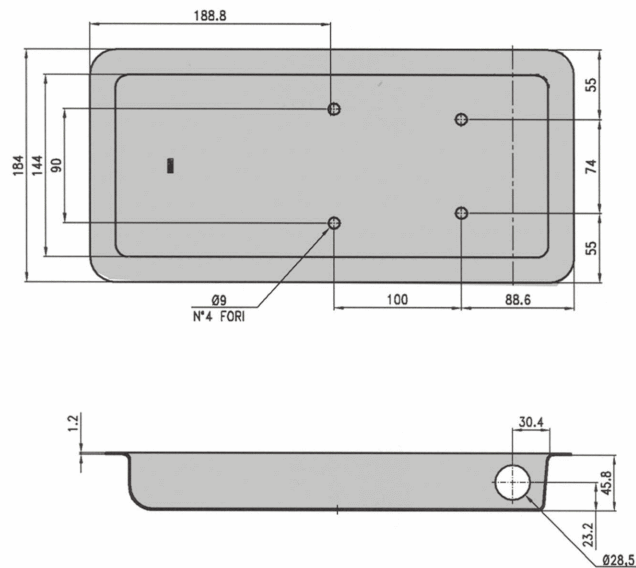
**Art. 38-00208**

Guida asta inox per asta D.22  
*S.s.tube guide for tube D.22*

(Kg. 0,190)

**Chiusure da incasso ( ASTE D.27 ) Recessed lock ( FOR TUBES D.27 )**

Art. 38-00095 Maniglia c/chiave inox L=305 *Stainless steel door handle with key L=305* (Kg. 2,055)



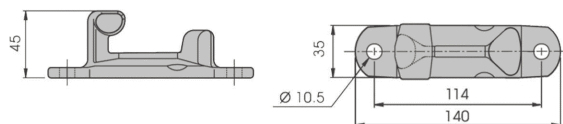
**A richiesta / On demand**

Art. 38-00095/S  
Scatola da incasso inox H.45,8 per asta D.27  
( per maniglia 38-00095 )

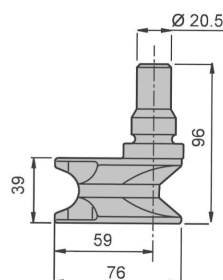
*S.s.case recessed door lock H=45,8 (tube D.27)* (Kg.0,950)  
( for art. 38-00095 )

## Arpioni / scontri / Guida Asta ( asta D.27 )

### Cams / Keepers / Tube guide ( tube D.27)



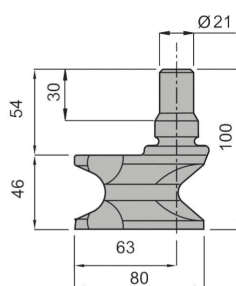
**Art. 38-00105** (Kg. 0,500)  
 Scontro inox (Big 4) per asta D.27  
 Stainless steel keeper for tube D.27



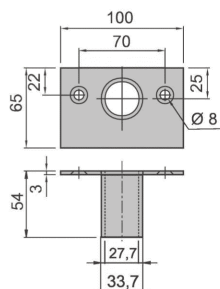
**Art. 38-00104** (Kg.0,540)  
 Arpione inox (Big 4) per asta D.27  
 Stainless steel cam for tube D.27



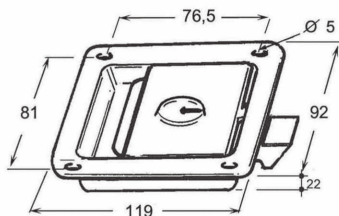
**Art. 38-00220** (Kg. 0,570)  
 Scontro per BIG2-BIG3 inox per asta D.27  
 S.s.keeper for tube D.27 BIG2-BIG3



**Art. 38-00218** (Kg.0,624)  
 Arpione per BIG3 inox per asta D.27  
 S.s.cam for tube D.27 BIG3



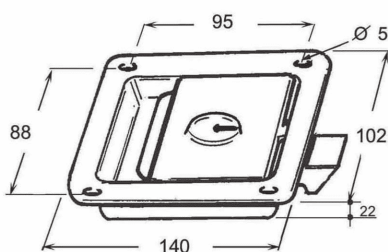
**Art. 38-00221** (Kg.0,240)  
 Guida asta inox per asta D.27  
 S.s.tube guide for tube D.27

**Chiusure da incasso con chiave 119 x 92*****Recessed locks with Key 119 x 92***

Art.	Chiusura / Locks	Nasello / Rib	Kg.
38-00228	inox con chiave / S.s. with Key	nylon	0,300
38-00229	zinc. con chiave / Galv. with Key	nylon	0,300
38-00230	inox con chiave / S.s. with Key	zincato / galvanized	0,300
38-00231	zinc. con chiave / Galv. with Key	zincato / galvanized	0,300

( dimensione utile per l'incasso 69 x 96 mm. )

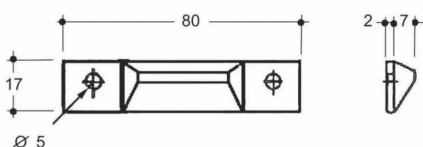
( dimensions for the housing 69x96 mm. )

**Chiusure da incasso con chiave 140 x 102*****Recessed locks with Key 140 x 102***

Art.	Chiusura / Locks	Nasello / Rib	Kg.
38-00233	inox con chiave / S.s. with Key	nylon	0,440
38-00234	inox senza chiave / S.s. without key	inox / S.s.	0,460
38-00235	inox con chiave / S.s. with Key	inox / S.s.	0,520
38-00238	zinc. con chiave / Galv. with Key	inox / S.s.	0,520

( dimensione utile per l'incasso 76 x 114 mm. )

( dimensions for the housing 76 x 114 mm. )

**Accessori per chiusura da incasso con nasello*****Accessories for recessed lock with plungers*****Art. 38-00239**Scontro inox per chiusure con nasello  
Stainless steel catch

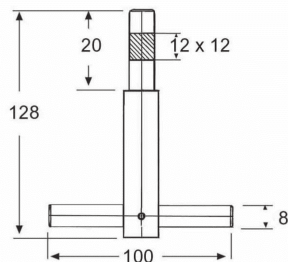
(Kg.0,020)

**Art. 38-00212**Nottolino chiave h.16mm.(chius.con nasello)  
Key barrel H.16mm.

(Kg.0,050)

## Accessori per chiusura cremonese

### *Accessories for cremonese bolt*

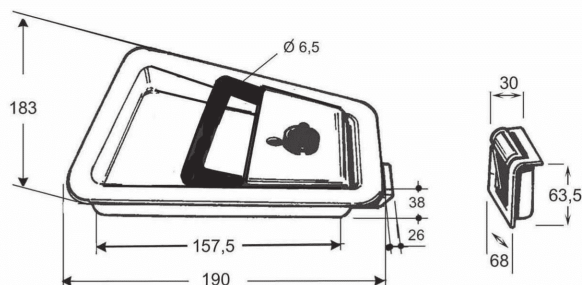


**Art. 38-00267**

Chiave quadra zinc. per chius.cremonese  
*Galvanized square key for cremonese bolt*  
 (Kg.0,406)

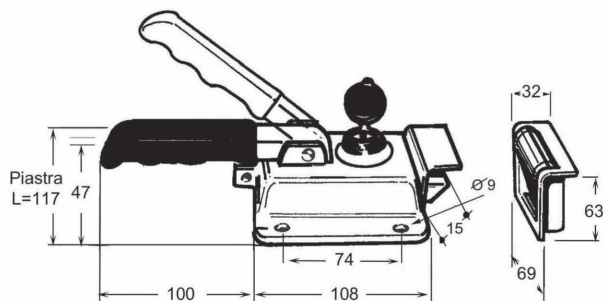
## Chiusure da incasso complete di scontro

### *Recessed locks with keeper*



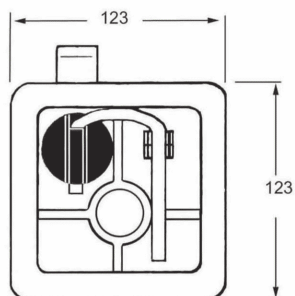
**Art. 38-00242**

Chiusura incassata inox completa di scontro  
*Stainless steel recessed lock with key and keeper*  
 (Kg.1,420)



**Art. 38-00244**

Chiusura da incasso inox completa di scontro  
*Stainless steel lock with key and keeper*  
 (Kg.1,500)

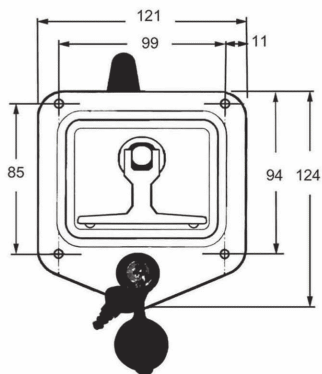
Chiusure incassate per cassetteRecessed locks for tool boxes**Art. 38-00246**

Chiusura tipo vecchio "C" inox  
S.steel recessed lock type "C"

(Kg.0,282)

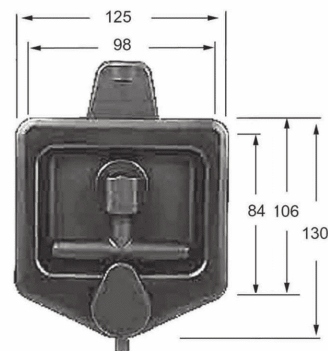
(Dim.utile per l'incasso 98x98mm)

(Dim.for the housing 98x98mm)



(Dim.utile per l'incasso 95x75mm)

(Dim.for the housing 95x75mm)

**Art. 38-00248**

Chiusura tipo "EUROPLEX"  
Recessed lock type "EUROPLEX"

(Kg.0,260)

**Art. 38-00249**

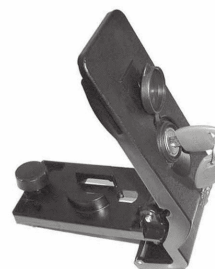
Chiusura tipo "F" inox con chiave  
S.s.recessed lock type "F" with key

(Kg.0,520)

**Art. 38-00250**

Chiusura in PVC per cass.temoplastiche box  
Recessed plastic lock with key  
for thermoplastic tool box

(Kg.0,162)

**Art. 38-00252**

Chius.termoplastica per cass."Vertigo"  
Recessed plastic lock for "Vertigo" box

(Kg.0,250)