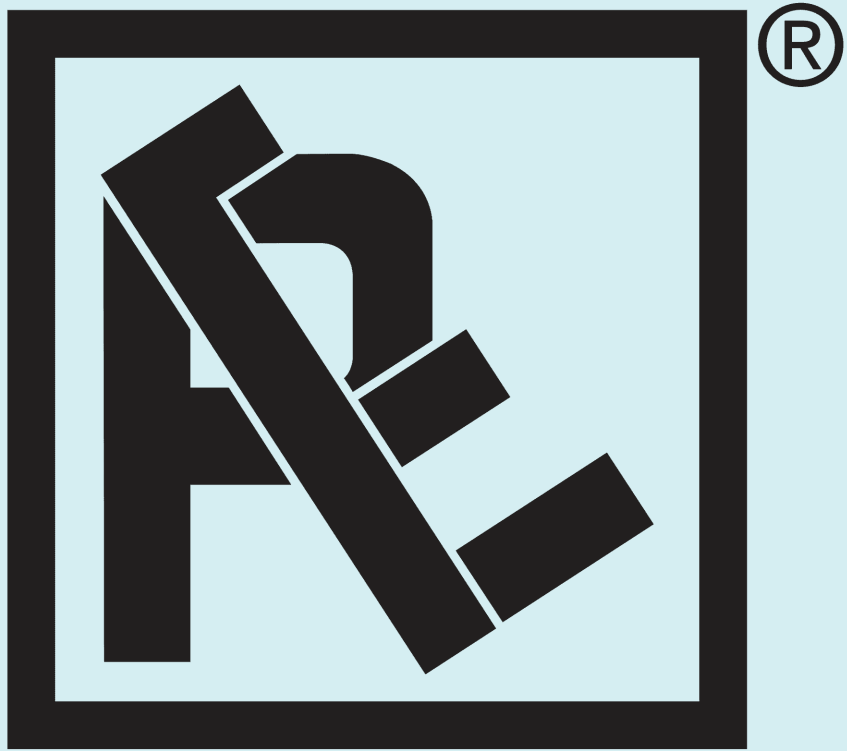


Componenti idraulici

Hydraulic components

43



RE-ALL

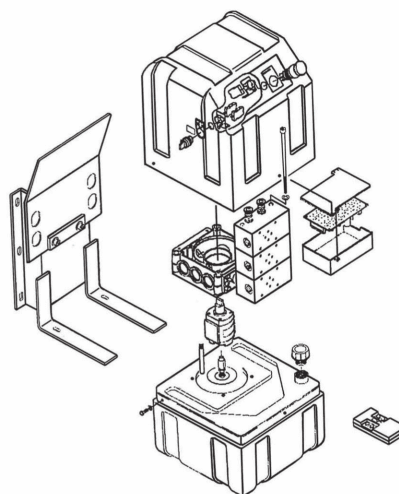
Centraline "serie COMPACT " / Power packs "COMPACT series"

Centraline "serie COMPACT "

- con :
- pompa 1P.2,6
 - serbatoio in plastica con coperchio 10 LT.
 - valvola

Power packs " COMPACT series "

- with :
- pump 1P.2,6
 - plastic tank with lid 10 LT.
 - valve



CARATTERISTICHE CENTRALINE " COMPACT "

SPECIFICATIONS POWER PACKS "COMPACT"

Art.	Motore <i>Engine</i>	Elettrovalvola / <i>Solenoid valve</i>		Pompa a mano <i>Hand pump relief</i>	Kg.
		con pulsantiera <i>with push-button</i>	con radiocom. <i>with radio control</i>		
43-00000	12 V. - 1800 W.	■			21,000
43-00000/PM	12 V. - 1800 W.	■		■	23,000
43-00000/RC	12 V. - 1800 W.		■		21,000
43-00000/RC/PM	12 V. - 1800 W.		■	■	23,000
43-00001	24 V. - 2500 W.	■			21,000
43-00001/PM	24 V. - 2500 W.	■		■	23,000
43-00001/RC	24 V. - 2500 W.		■		21,000
43-00001/RC/PM	24 V. - 2500 W.		■	■	23,000

Art. 43-00002

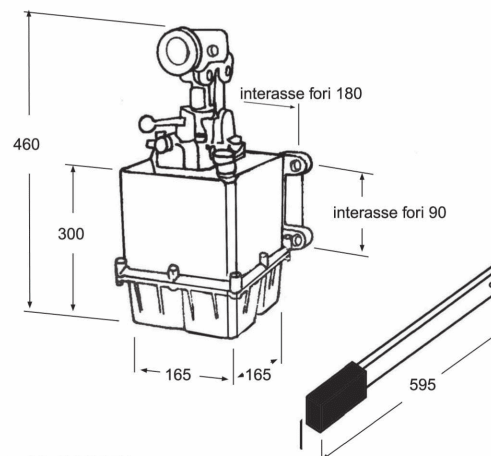
Pompa a mano di soccorso a 2/effetto completa di :

- Invertitore di flusso serie PM-S/.....
- Pressione massima 300 bar
- Serbatoio 10 LT.

(Kg.5,000)

Hand pump with double effect with:

- Distributor PM-S/..... series
- Maximum pressure 300 bar
- Tank 10 LT.

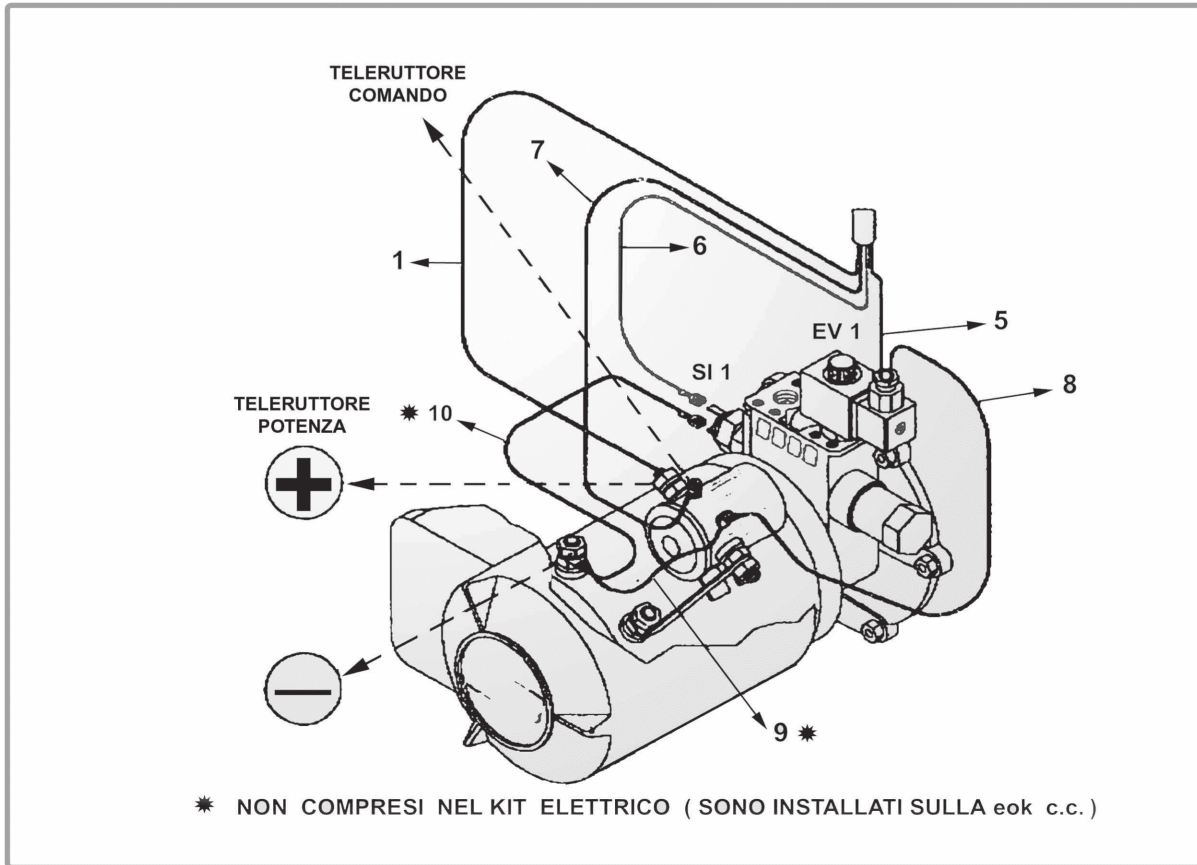


Art. 43-00002/A

Asta (ricambio) / original spare part 4300002

Schema per centralina elettrica da ribaltabile a norma CEE

Scheme for fully electric power pack for tipper (CEE)



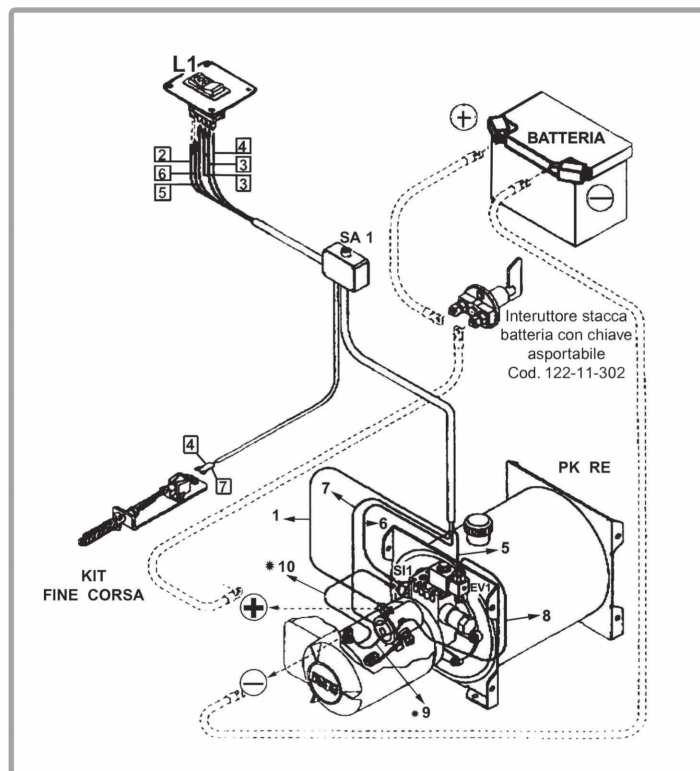
Art. 43-00037

Centralina per ribaltabile
completamente elettrica
con motore 12 V.-1800 W. completa di :

*Fully electric power pack for tipper
with engine 12V. - 1800 W. with:*

- Spia luminosa con cavo
Light
- Connettore attacco rapido
Quick connection
- kit elettrico con cablaggio e fine corsa
Electrical kit
- Pressostato
Pressure gauge

(Kg.18,00)



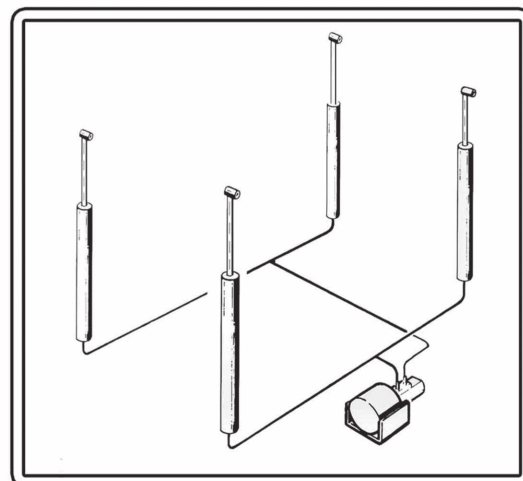
Componenti per centinature sollevabili idraulicamente

Equipments for curtains hydraulically raised

Cilindri idraulici a doppio effetto

Hydraulic cylinders double effect

Art.	Corsa / Strokes until	D.	Kg.
43-00004	800	40	6,500
43-00004/45	800	45	7,500
43-00005	1000	40	7,500
43-00005/45	1000	45	9,000
43-00006	1200	40	9,500
43-00006/45	1200	45	10,500
43-00007	1500	40	11,000
43-00007/45	1500	45	12,500



Kit idraulico per travaso volumetrico con : ***** <i>Hydraulic kits for volumetric transfer with :</i>	Centralina 12 V. Power pack 12 V.	Centralina 24 V. Power pack 24 V.	Pompa a mano Hand pump	Corsa Strokes until
	43-00020	43-00020/24	43-00024	800
	43-00021	43-00021/24	43-00025	1000
	43-00022	43-00022/24	43-00026	1200
	43-00023	43-00023/24	43-00027	1500
(kit escluso tubazioni / Kits without pipe)				

Kit idraulico con ripartitore di flusso con : ***** <i>Hydraulic kits with flow divider with :</i>	Centralina 12 V. Power pack 12 V.	Centralina 24 V. Power pack 24 V.	Pompa a mano Hand pump	Corsa Strokes until
	43-00120	43-00120/24	43-00124	800
	43-00121	43-00121/24	43-00125	1000
	43-00122	43-00122/24	43-00126	1200
	43-00123	43-00123/24	43-00127	1500
(kit escluso tubazioni / Kits without pipe)				

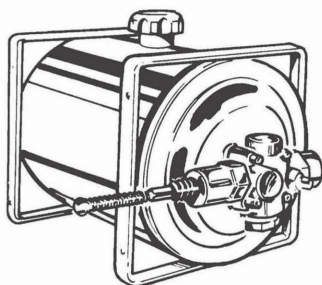
N.B. :

Con la prima fornitura del materiale per la realizzazione del gruppo di sollevamento della centinatura verranno forniti gli schemi idraulici per il montaggio.

Together with the material will be given even the assembly diagrams

Componenti idraulici

Hydraulic components

Su richiesta / On demand

Art. 43-00035 (Kg.7,490)

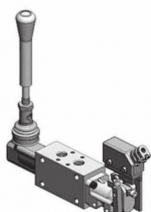
Serbatoio olio LT. 10 completo di valvola per ribaltabile elettrica
Oil tank Lt. 10 - with electric valve

Art. 43-00033 (Kg.9,000)

Serbatoio olio LT. 15 completo di valvola per ribaltabile elettrica
Oil tank Lt. 15 - with electric valve

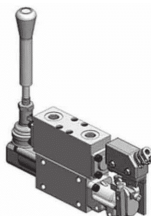
Art. 43-00036 (Kg.10,400)

Serbatoio olio LT. 20 completo di valvola per ribaltabile meccanica
Oil tank Lt. 20-with mechanical valve



Art. 43-00028 (Kg.1,146)

Distributore supplementare *Additional distributor*



Art. 43-00029 (Kg.1,146)

Distributore supplementare con valvola di blocco
Additional distributor with safety valve



Art. 43-00039 (Kg.1,095)

Telecomando L=2000 *Control with cable L=2000*

Art. 43-00038 (Kg.1,310)

Telecomando L=3000 *Control with cable L=3000*

Art. 43-00040 (Kg.1,520)

Telecomando L=4000 *Control with cable L=4000*



Art. 43-00089 (Kg.0,339)

Motorini per centraline 24 Volt *Engine for power pack 24 Volt*

Componenti idraulici

Hydraulic components

Su richiesta / On demand



Art. 43-00096
Stacca batterie

Battery switches

(Kg.0,118)



Art. 43-00032
Micron 12/24 Volt.

(Kg.0,064)



Art. 43-00097/12
Teleruttore completo di staffe e cavetti 12 Volt
Contactora with brackets and cables 12 Volt

(Kg.0,605)

Art. 43-00097/24
Teleruttore completo di staffe e cavetti 24 Volt
Contactora with brackets and cables 24 Volt

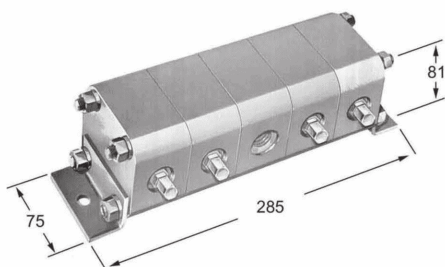
(Kg.0,864)



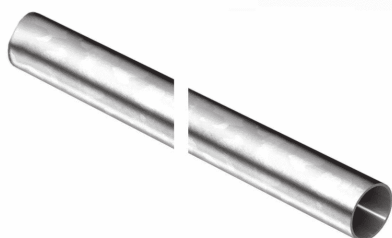
Art. 43-00015
Niplo 1/4 gas

Niplo 1/4 gas

(Kg.0,030)



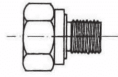
Art. 43-00059 (Kg.7,380)
Ripartitore di flusso per centine 4 stadi cl. 2,11
Flow dividers 4 sections cl. 2,11



Art. 43-00018 (Kg./mt 0,314)
Tubo impianto oleodinamico D.10x1,5 zincato
Tube for hydraulic system D.10x1,5 galvanized

Riduzioni e Raccordi

Reductions and Fittings

Su richiesta / On demand

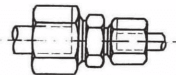
Art. 43-00008 (Kg.0,067)
Riduzione maschio 3/8" - femmina 1/4"
Reduction male part 3/8" - female part 1/4"

Art. 43-00016 (Kg.0,066)
Riduzione maschio 1/4" - femmina 3/8"
Reduction male part 1/4" - female part 3/8"

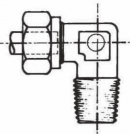
Art. 43-00034 (Kg.0,090)
Riduzione maschio 1/2" - femmina 3/8"
Reduction male part 1/2" - female part 3/8"



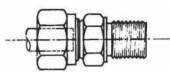
Art. 43-00019 (Kg.0,033)
Riduzione a codolo da D.10 a D.8
Reduction from D.10 to D.8



Art. 43-00092 (Kg.0,060)
Riduzione diretta da tubo D.10 a D.8
Reduction from D.10 to D.8

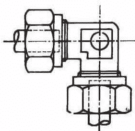


Art. 43-00090 (Kg.0,056)
Raccordo di estremità a gomito Tubo D.10 - Maschio 1/4"
Fitting tube D.10 and male part 1/4"

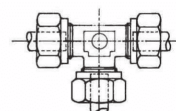


Art. 43-00012 (Kg.0,055)
Raccordo di estremità c/fil.gas diretto Tubo D.10 - Maschio 3/8"
Fitting tube D.10 and male part 3/8"

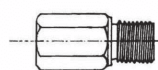
Art. 43-00091 (Kg.0,043)
Raccordo di estremità diretto Tubo D.10 - Maschio 1/4"
Fitting tube D.10 and male part 1/4"



Art. 43-00011 (Kg.0,073)
Raccordo intermedio a gomito Tubo D.10 *Fitting tube D.10*



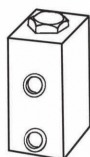
Art. 43-00014 (Kg.0,107)
Raccordo intermedio a "T" Tubo D.10 *Fitting tube D.10*



Art. 43-00017 (Kg.0,066)
Prolunga maschio 1/4" femmina 1/4"
Extension male part 1/4" female part 1/4"

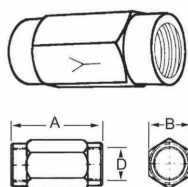
Valvole per impianto idraulico

Valves for hydraulic system



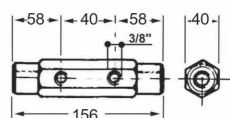
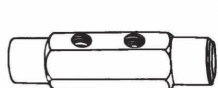
Valvola ripartitrice di flusso a 2 vie VR
Flow control valve - 2 ways - VR

Tipo / Type	Art.	Cap. max.	Press max.
		Lt/min .	bar
VR - 6/10	43-00041	6 ÷ 10	210
VR - 13/22	43-00042	13 ÷ 22	210
VR - 25/38	43-00043	25 ÷ 38	210
VR - 56/95	43-00044	56 ÷ 95	210



Valvola di ritegno industriale
Check valve

Tipo / Type	Art.	Cap. max. lt/1	Press max. Kg/cm ²	Dimensioni d'ingombro Overall dimension		
				A	B	Ø D
1/4" gas	43-00045	15	300	62	19	1/4" gas
3/8" gas	43-00046	30	300	77	27	3/8" gas
1/2" gas	43-00047	60	250	77	30	1/2" gas
3/4" gas	43-00048	90	250	90	36	3/4" gas
1" gas	43-00049	120	220	110	46	1" gas
1 1/4" gas	43-00050	200	220	120	55	1 1/4" gas



Valvola di ritegno esagonale doppio pilotaggio
Check valve

Tipo / Type	Art.	Cap. max. lt/1	Press max. Kg/cm ²
3/8" Gas	43-00052	30	220



Art. 43-00057

Valvola strozzatrice 3/8" gas

Check valve 3/8" gas

(Kg.0,603)



Art. 43-00058

Valvola regolatrice di flusso 3/8" gas

Flow control valve 3/8" gas

(Kg.0,402)



Art. 43-00055

Valvola di ritegno tubo - Tubo D.10

Check valve Tube D.10

(Kg.0,153)

Art. 43-00056

Valvola di ritegno tubo - Tubo D.12

Check valve Tube D.12

(Kg.0,337)

Valvole per impianto idraulico

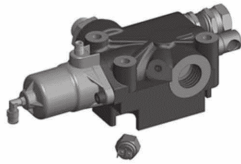
Valves for hydraulic system



Art. 43-00054

(Kg.0,522)

Comando per valvola 3 leve con spia Valve control (3 lever with indicator)



Art. 43-00110

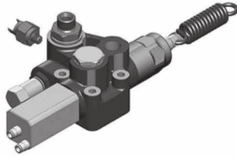
Valvola discesa tipo modular 250

Lowering valve

Art. 43-00111

Valvola discesa tipo modular 200

Lowering valve



Art. 43-00113

Valvola discesa meccanica (mod. FP80)

Lowering valve



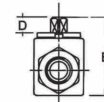
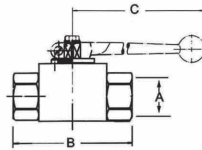
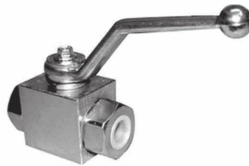
Art. 43-00114

Valvola discesa meccanica (mod. FM80)

Lowering valve

Rubinetti a sfera

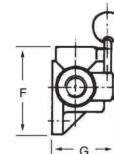
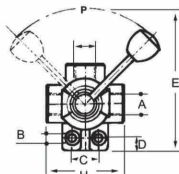
Taps



TI TIPO / TYPE	ART	DN	DIMENSIONI D'INGOMBRO / OVERALL DIMENSION				
			Ø A	B	C	D	E
1/4" Gas	43-00060	6	1/4" Gas	69	105	16	54
3/8" Gas	43-00061	10	3/8" Gas	72	105	16	56
1/2" Gas	43-00062	13	1/2" Gas	83	105	14	54
3/4" Gas	43-00063	20	3/4" Gas	95	200	14	75
1" Gas	43-00064	25	1" Gas	113	200	14	78

Deviatori

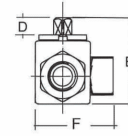
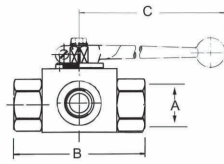
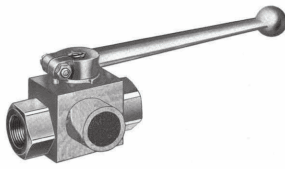
Taps



TIPO / TYPE	ART	Cap. max. lt/1'	Press. max. Kg/cm2	DIMENSIONI D'INGOMBRO / OVERALL DIMENSION							
				Ø A	Ø B	C	D	E	F	G	H
3/4" Gas	43-00071	80	180	3/4" Gas	11	32	15	185	100	78	90

Deviatori

Taps



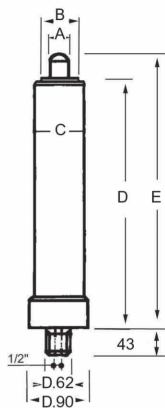
TIPO / TYPE	ART	Cap. max. lt/1'	Press. max Kg/cm ²	DIMENSIONI D'INGOMBRO / OVERALL DIMENSION					
				Ø A	B	C	D	E	F
3/8" Gas	43-00074	35	180	3/8" Gas	73	105	14	55	50
1/2" Gas	43-00070	50	180	1/2" Gas	85	105	14	57	54
1" Gas	43-00072	120	180	1" Gas	113	150	18	87	86
1"1/2 Gas	43-00073	180	180	1"1/2 Gas	125	165	21	83	96



Innesti rapidi a sfera tipo normale
Quick couplings normal type

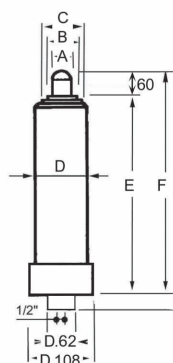
Art.	Tipo/Type	Press. max Kg./c m ²	Cap. max lt/1'
43-00080	1/4" Gas	200	15
43-00081	3/8" Gas	200	25
43-00082	1/2" Gas	180	40
43-00083	3/4" Gas	160	80
43-00084	1" Gas	150	120

Pistoni a semplice effetto per sollevamento pianali trasporto bestiame
Hydraulic cylinders at simple effect for lifting platforms for livestock transport



with 2 extensions

Art.	corsa strokes	A	B	C	D	E
43-00101	1800	42	60	75	1030	1080
43-00102	1900	42	60	75	1080	1130
43-00103	2000	42	60	75	1130	1180



with 3 extensions

Art.	corsa strokes	A	B	C	D	E	F
43-00104	2000	45	60	75	90	790	850

